



SAGA-S – The saga continues

Precise and durable silicone lenses are LEDiL's pride and joy when talked about future of LED lights. They provide excellent thermal resistance, ingenious design elements and high efficiency rates. The new SAGA-S steps up to the arena of spot lights with ingress protection against dust and dirt up to IP67. The hyper reflective white frame helps to achieve a stylish look and reduce unwanted glare.

FEATURES

- Very good thermal, impact and UV resistance
- Innovative hybrid design with precision molded silicone
- Hyper reflective white frame to reduce glare
- Ingress protection up to IP67

COMPATIBILITY

- Connectors and COB's with LES size up to 18 mm in diameter from a range of manufacturers
- Zhaga compatible fastening

TYPICAL APPLICATIONS

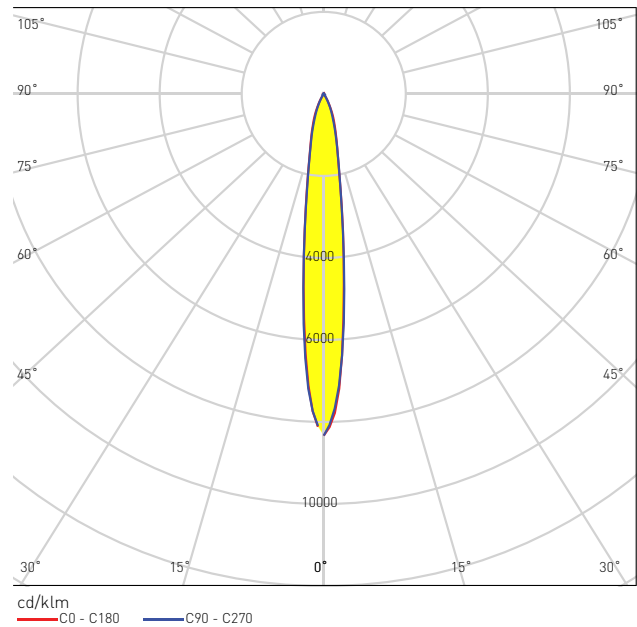
- Low bay lighting
- Architectural lighting
- Industrial lighting
- Hospitality lighting
- Down lighting
- Track lighting



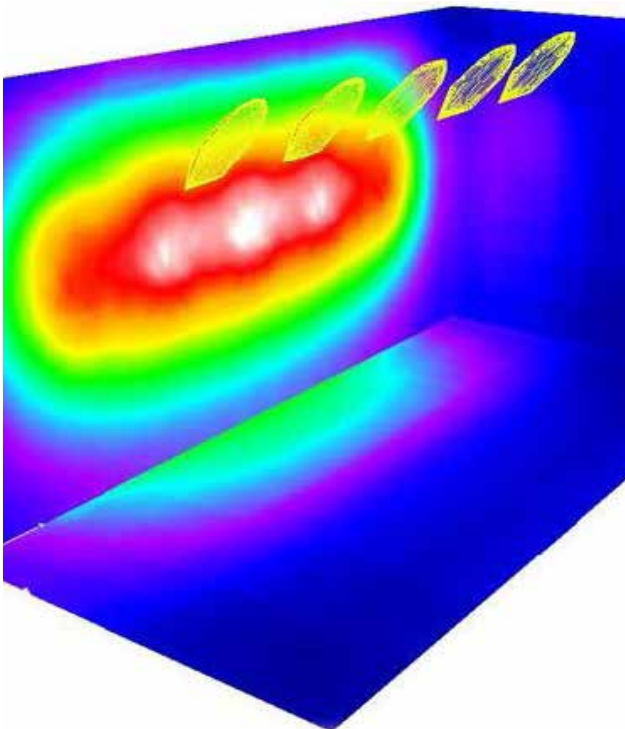
FCN14933_SAGA-S-WHT

TECHNICAL SPECIFICATIONS

- Diameter 50 mm
- Height 13.7 mm
- Typical FWHM with 6-12 mm LES: 15-30°
- Typical efficiency: 94%
- Frame is precision-molded from Hyper-Reflective White PC- UL94 HB rated material with operating rating -40°C to +120°C
- TIR lens is molded from optical grade silicone
- Zhaga compliant fastening with two M3 screws 35 mm apart
- Compatible with small and medium size COBs



APPLICATION EXAMPLE



SAGA-S Track light

- 5 luminaires with Cree CXA1850 COB
- Luminous flux per luminaire 2990 lm
- Distance between luminaires 1.5 m
- Room size 5x10 m
- Mounting height 5 m
- Tilt 45 degrees
- Distance to wall 3 m
- Average illumination 205 lx
- Uniformity (u0) 0.156

ORDERING INFORMATION

FCN14933_SAGA-S-WHT

Visit www.ledil.com for ordering codes and latest product specifications, which may vary by LED