

## HB-2X2-0 – Energy efficient warehouse lighting

LEDiL introduces a new addition to its High Bay 2x2 module range. The new C13749\_HB-2X2-0 has been developed especially for illuminating warehouses with high shelves so that no light is wasted on the shelves. C13749\_HB-2X2-0 produces an oval beam pattern suitable for aisle lighting with enough sideways light to provide the necessary vertical illumination on the fronts of the shelves.

HB-2X2-0 is designed to work with a range of high power LEDs from Cree, Osram, Philips Lumileds and Nichia.

### FEATURES

- Developed especially for warehouse aisle lighting application, aisle width 3-4 meters.
- Optimized for a range of high power LEDs, up to XM-L size.
- HB-2X2-0 features the versatile footprint compatible across the whole 2x2 module family.

### TYPICAL APPLICATIONS

- High bay lighting

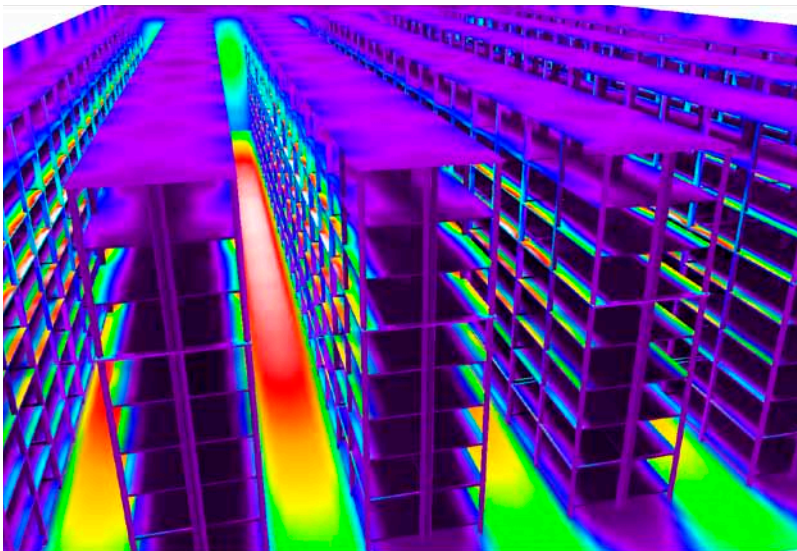


C13749\_HB-2X2-0

## TECHNICAL SPECIFICATIONS

- Diameter 50 x 50 mm
- Height 10,6 mm
- Precision-molded from optical grade PMMA – UL94 HB rated material with operating rating -40°C to +80°C
- Four sources, for LEDs up to XM-L size
- Typical efficiency 94 %
- Oval beam type suitable for warehouse aisle lighting

## DESIGN EXAMPLE



Luminaire installation height: 14 meters  
 Luminaire spacing: 6 meters  
 Luminaires are installed on the aisle centerline

Number of luminaires: 66 pcs  
 Number of LEDs / luminaire: 25 pcs @ 1000 mA  
 Power consumption / luminaire: approx. 70W

Avg. illuminance at floor level: ≈100 lx

Illuminance uniformity on the shelf vertical face ( $E_{min}/E_{avg}$ ): better than 0,5

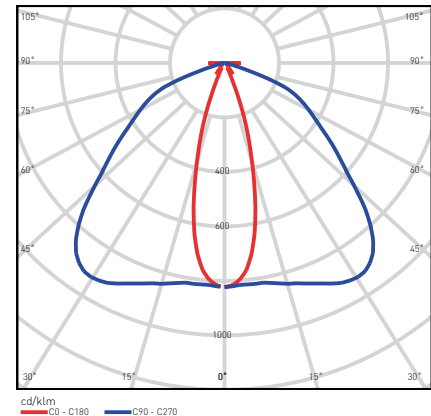
Total power consumption: 4,6 kW (≈ 1,9 W/m<sup>2</sup>)

Approximated energy savings when compared to conventional fluorescent lighting: ≈40%

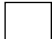







## ORDERING INFORMATION

C13749\_HB-2X2-0

Visit [www.ledil.com](http://www.ledil.com) for ordering codes and latest product specifications, which may vary by LED



- Luminaire installation height: 14 m
- Installed in the aisle centerline
- Fixture luminous flux 6200 lm
- LED luminous flux 7000 lm

- Illuminance levels:
- |   |        |
|---|--------|
|   | 130 lx |
|  | 113 lx |
|  | 97 lx  |
|  | 81 lx  |
|  | 65 lx  |
|  | 48 lx  |
|  | 32 lx  |
|  | 16 lx  |