

## YASMEEN-35-NS

~14° spot beam

### SPECIFICATION:

Dimensions	Ø 35.0 mm
Height	18 mm
Fastening	socket
ROHS compliant	yes ⓘ

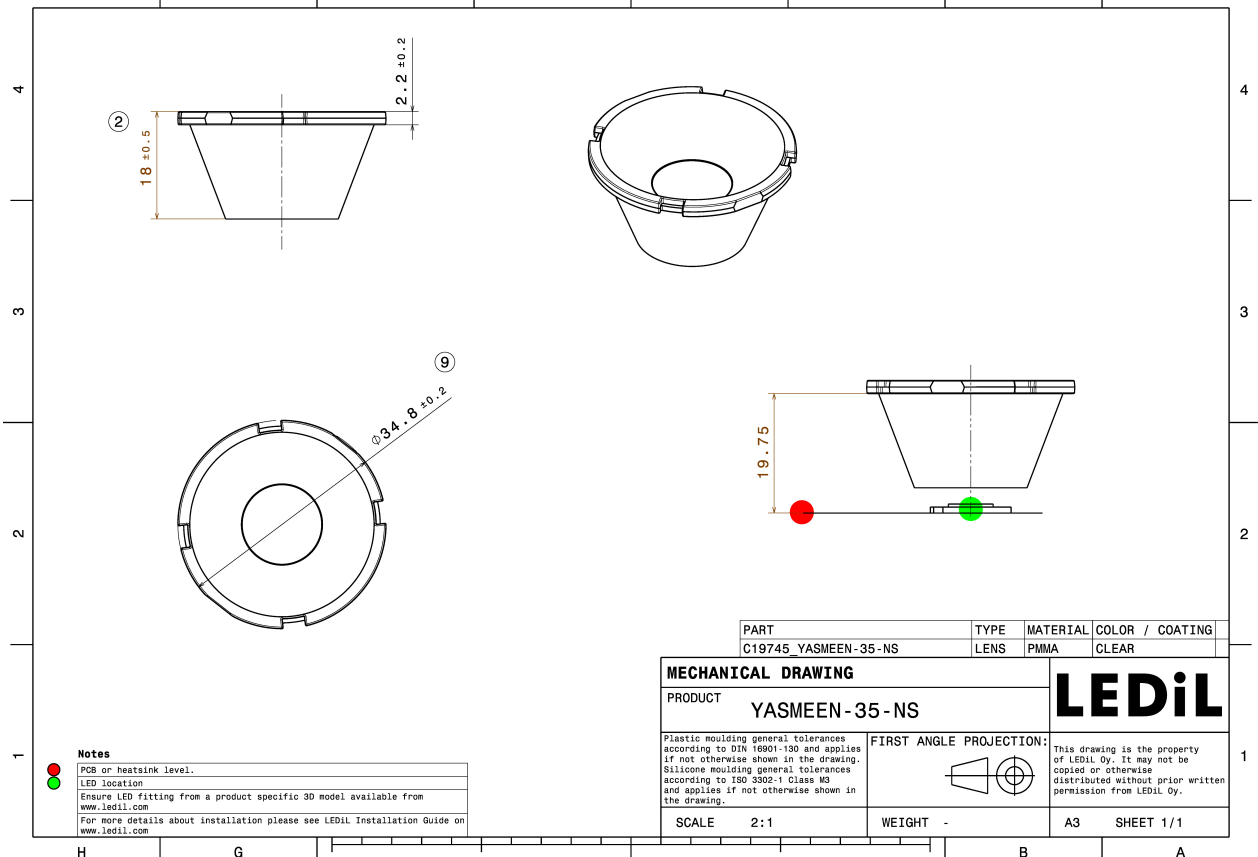
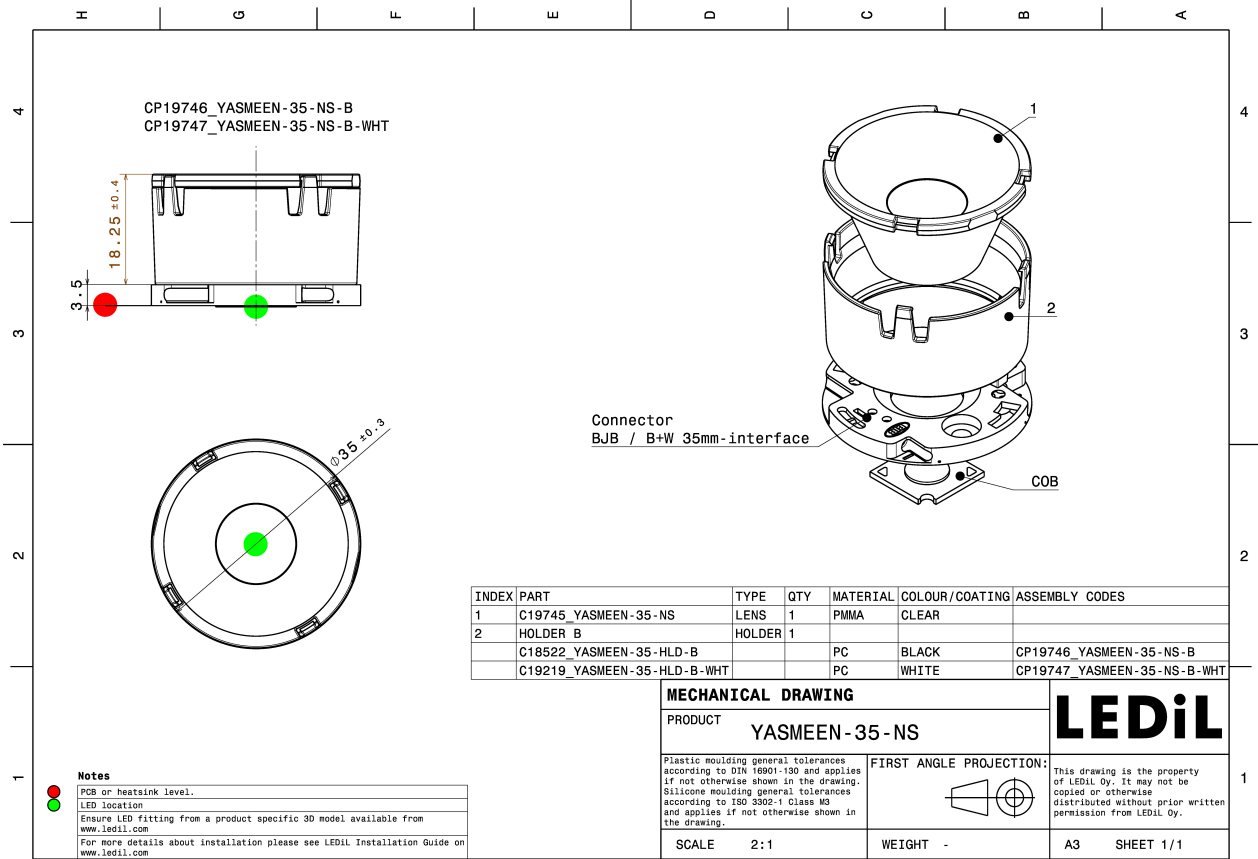
### MATERIALS:

Component	Type	Material	Colour	Finish	Length (mm)
YASMEEN-35-NS	Single lens	PMMA	clear		
YASMEEN-35-HLD-B	Holder B	PC	black		
YASMEEN-35-HLD-B-WHT	Holder B	PC	white		



### ORDERING INFORMATION:

Component	Qty in box	MOQ	MPQ	Box weight (kg)
<b>Assembly</b>				
CP19747_YASMEEN-35-NS-B-WHT	780	120	60	9.5
CP19746_YASMEEN-35-NS-B	780	120	60	9.5

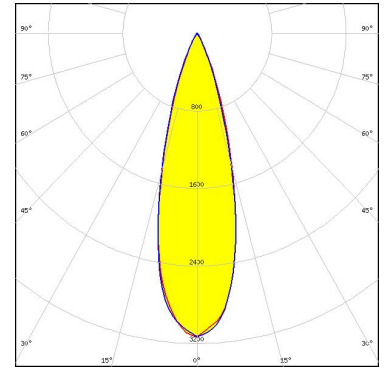


See also our general installation guide: [www.ledil.com/installation\\_guide](http://www.ledil.com/installation_guide)

### OPTICAL RESULTS (SIMULATED):



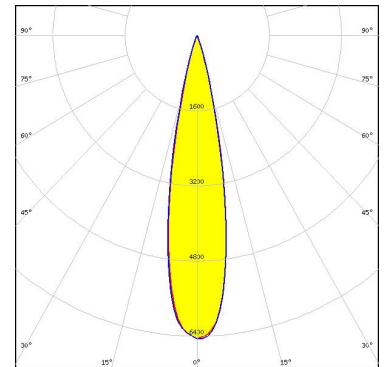
**LED** V10 Gen 8-9  
**Ordering code** CP19746\_YASMEEN-35-S-B  
**FWHM / FWTM** 28.0° / 50.0°  
**Efficiency** 87 %  
**Peak intensity** 3.1 cd/lm  
**LEDs/each optic** 1  
**Light colour/type** White  
**Required components:**



Bender Wirth: 634b Bayonet35L



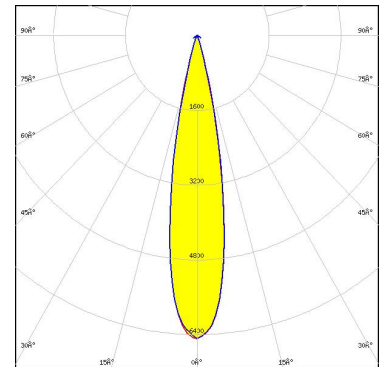
**LED** V6 HD Gen 8  
**Ordering code** CP19746\_YASMEEN-35-S-B  
**FWHM / FWTM** 22.0° / 34.0°  
**Efficiency** 90 %  
**Peak intensity** 6.5 cd/lm  
**LEDs/each optic** 1  
**Light colour/type** White  
**Required components:**



Bender Wirth: 634c Bayonet35L

## CITIZEN

**LED** CLL02x/CLU02x (LES10)  
**Ordering code** CP19746\_YASMEEN-35-NS-B  
**FWHM / FWTM** 20.0° / 32.0°  
**Efficiency** 89 %  
**Peak intensity** 6.5 cd/lm  
**LEDs/each optic** 1  
**Light colour/type** White  
**Required components:**



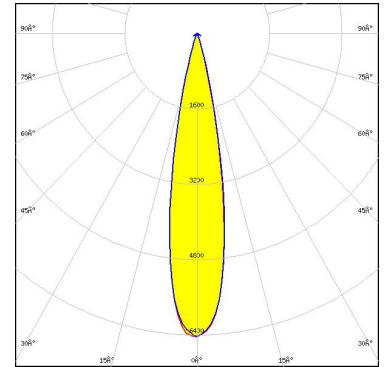
BJB: 47.360.1020

Light distribution files

### OPTICAL RESULTS (SIMULATED):

#### CITIZEN

LED CLU700/701/702/703  
Ordering code CP19746\_YASMEEN-35-NS-B  
FWHM / FWTM 20.0° / 32.0°  
Efficiency 89 %  
Peak intensity 6.4 cd/lm  
LEDs/each optic 1  
Light colour/type White  
Required components:

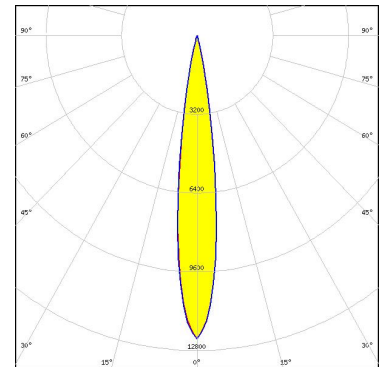


BJB: 47.360.1020

Light distribution files

#### CITIZEN

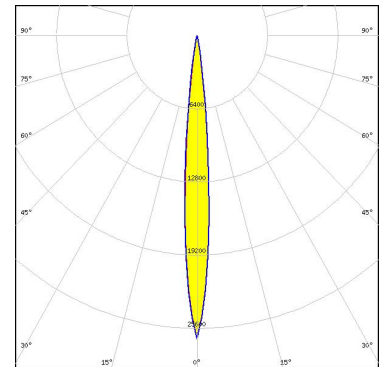
LED CLU7A2/7A3  
Ordering code CP19746\_YASMEEN-35-S-B  
FWHM / FWTM 14.0° / 26.0°  
Efficiency 89 %  
Peak intensity 12.3 cd/lm  
LEDs/each optic 1  
Light colour/type White  
Required components:



BJB: 47.360.1020

#### CITIZEN

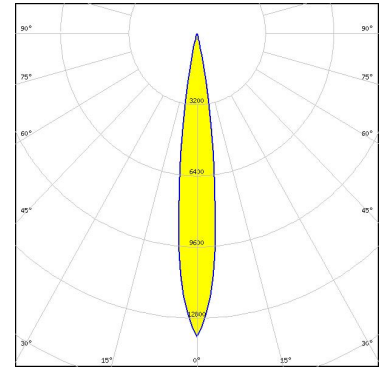
LED CLU7L3  
Ordering code CP19746\_YASMEEN-35-S-B  
FWHM / FWTM 10.0° / 18.0°  
Efficiency 89 %  
Peak intensity 26.5 cd/lm  
LEDs/each optic 1  
Light colour/type White  
Required components:  
C19425\_SOCKET-B-35-N



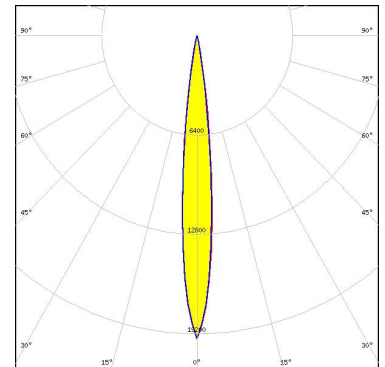
### OPTICAL RESULTS (SIMULATED):

#### CITIZEN

LED: CLU7R3  
Ordering code: CP19746\_YASMEEN-35-S-B  
FWHM / FWTM: 14.0° / 24.0°  
Efficiency: 90 %  
Peak intensity: 13.6 cd/lm  
LEDs/each optic: 1  
Light colour/type: White  
Required components:  
C19424\_SOCKET-B-35-M



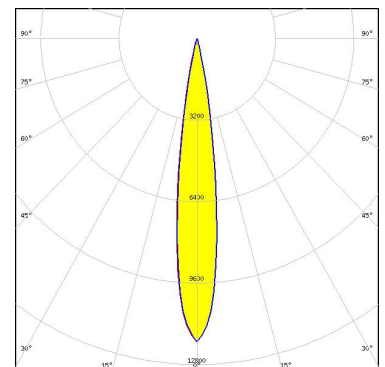
LED: CHA0304  
Ordering code: CP19746\_YASMEEN-35-S-B  
FWHM / FWTM: 12.0° / 20.0°  
Efficiency: 89 %  
Peak intensity: 19.5 cd/lm  
LEDs/each optic: 1  
Light colour/type: White  
Required components:



BJB: 47.360.1020



LED: CHA0410  
Ordering code: CP19746\_YASMEEN-35-S-B  
FWHM / FWTM: 15.0° / 26.0°  
Efficiency: 89 %  
Peak intensity: 11.9 cd/lm  
LEDs/each optic: 1  
Light colour/type: White  
Required components:

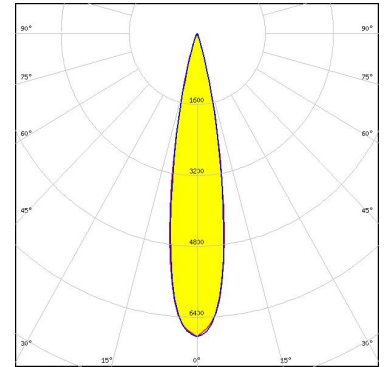


BJB: 47.360.1020

### OPTICAL RESULTS (SIMULATED):



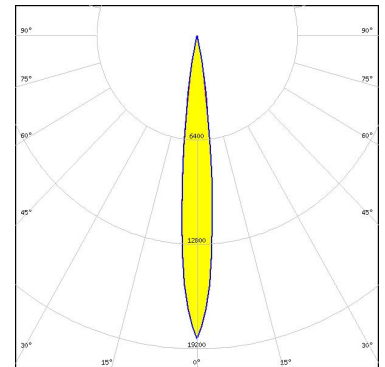
LED: CHA0612  
Ordering code: CP19746\_YASMEEN-35-S-B  
FWHM / FWTM: 20.0° / 34.0°  
Efficiency: 89 %  
Peak intensity: 6.8 cd/lm  
LEDs/each optic: 1  
Light colour/type: White  
Required components:



BJB: 47.360.1020



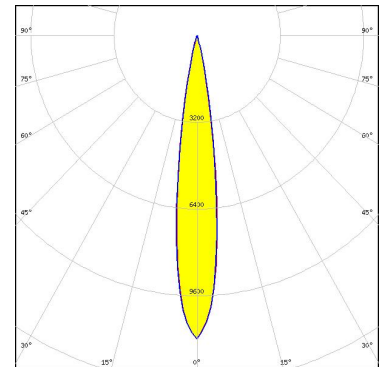
LED: CXM-3  
Ordering code: CP19746\_YASMEEN-35-S-B  
FWHM / FWTM: 12.0° / 22.0°  
Efficiency: 90 %  
Peak intensity: 18.6 cd/lm  
LEDs/each optic: 1  
Light colour/type: White  
Required components:



BJB: 47.360.1020



LED: CXM-4  
Ordering code: CP19746\_YASMEEN-35-S-B  
FWHM / FWTM: 16.0° / 26.0°  
Efficiency: 89 %  
Peak intensity: 11.2 cd/lm  
LEDs/each optic: 1  
Light colour/type: White  
Required components:

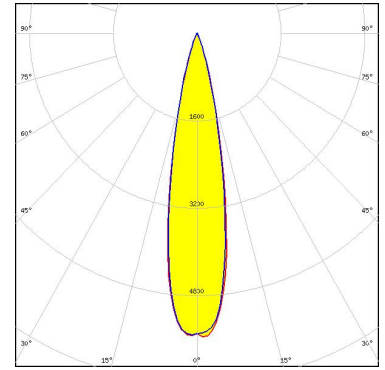


BJB: 47.360.1020

### OPTICAL RESULTS (SIMULATED):



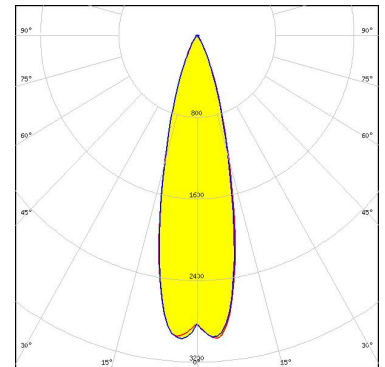
LED CxM-6 (13.5x13.5)  
Ordering code CP19746\_YASMEEN-35-S-B  
FWHM / FWTM 22.0° / 38.0°  
Efficiency 88 %  
Peak intensity 5.6 cd/lm  
LEDs/each optic 1  
Light colour/type White  
Required components:



BJB: 47.360.1020



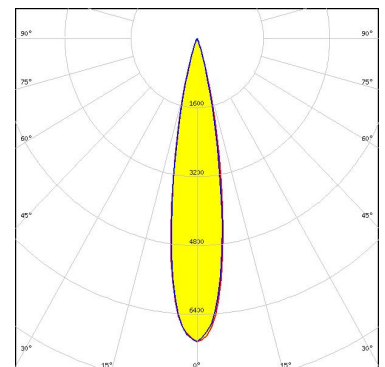
LED LC003D / LC006D / LC009D / LC013D  
Ordering code CP19746\_YASMEEN-35-S-B  
FWHM / FWTM 28.0° / 50.0°  
Efficiency 84 %  
Peak intensity 3 cd/lm  
LEDs/each optic 1  
Light colour/type White  
Required components:



BJB: 47.360.1020



LED LC010C G2  
Ordering code CP19746\_YASMEEN-35-S-B  
FWHM / FWTM 19.0° / 34.0°  
Efficiency 89 %  
Peak intensity 7 cd/lm  
LEDs/each optic 1  
Light colour/type White  
Required components:  
C18968\_SOCKET-B-35-C

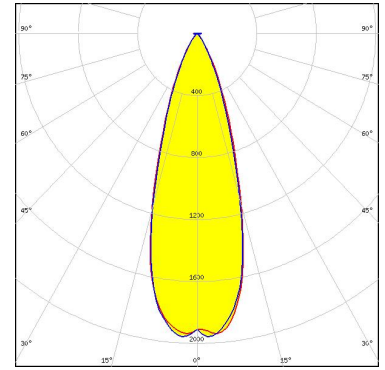




### OPTICAL RESULTS (SIMULATED):

## SAMSUNG

LED	LC030C/040C G2
Ordering code	CP19746_YASMEEN-35-S-B
FWHM / FWTM	33.0° / 59.0°
Efficiency	77 %
Peak intensity	2 cd/lm
LEDs/each optic	1
Light colour/type	White
Required components:	



BJB: 47.360.1010

### GENERAL INFORMATION:

NOTE: The typical beam angle will be changed by different color, chip size and chip position tolerance. The typical total beam angle is the full angle measured where the luminous intensity is half of the peak value.

Due to use of high power COB's with this product, special attention to proper thermal design is highly recommended. LEDiL has no liability for direct, indirect or consecutive damages arising from the LEDiL products being used outside of the recommended temperature range.

### MATERIALS:

As part of our continuous research and improvement processes, and to ensure the best possible quality and availability of our products, LEDiL reserves the right to change material grades without notice.

### PRODUCT DATA USER AGREEMENT AND DISCLAIMER:

The measured data in the provided downloadable LEDiL Product Datasheets and Mechanical 2D-Drawings is rounded and provided as reference for planning. LEDiL Oy's optical specifications have been verified by conducting performance testing of the products in accordance with the company's quality system. The reported data are averaged results of multiple measurements with typical variation. LEDiL Oy reserves the right to without prior notification make changes and improvements to its products.

LEDiL Oy assumes neither warranty, nor guarantee nor any other liability of any kind for the contents and correctness of the provided data. The provided data has been generated with highest diligence but the provided data may in reality not represent the complete possible variation range of all intrinsic parameters. Therefore, in certain cases a deviation from the provided data could occur.

LEDiL Oy reserves the right to undertake technical changes of its products without further notification which could lead to changes in the provided data. LEDiL Oy assumes no liability of any kind for the possible deviation from any provided data or any other damage resulting from the usage of the provided data.

The user agrees to this disclaimer and user agreement with the download or usage of the provided files.

#### LEDiL Oy

Joensuunkatu 13  
FI-24240 SALO  
Finland

#### LEDiL Inc.

228 West Page Street  
Suite D  
Sycamore IL 60178  
USA

#### Ledil Optics Technology (Shenzhen) Co., Ltd.

# 405 , Block B  
Casic Motor Building  
Shenzhen 518057  
P.R.CHINA

#### Local sales and technical support

[www.ledil.com/  
where\\_to\\_buy](http://www.ledil.com/where_to_buy)

#### Shipping locations

Poznan, Poland  
Hong Kong, China

#### Distribution Partners

[www.ledil.com/  
where\\_to\\_buy](http://www.ledil.com/where_to_buy)