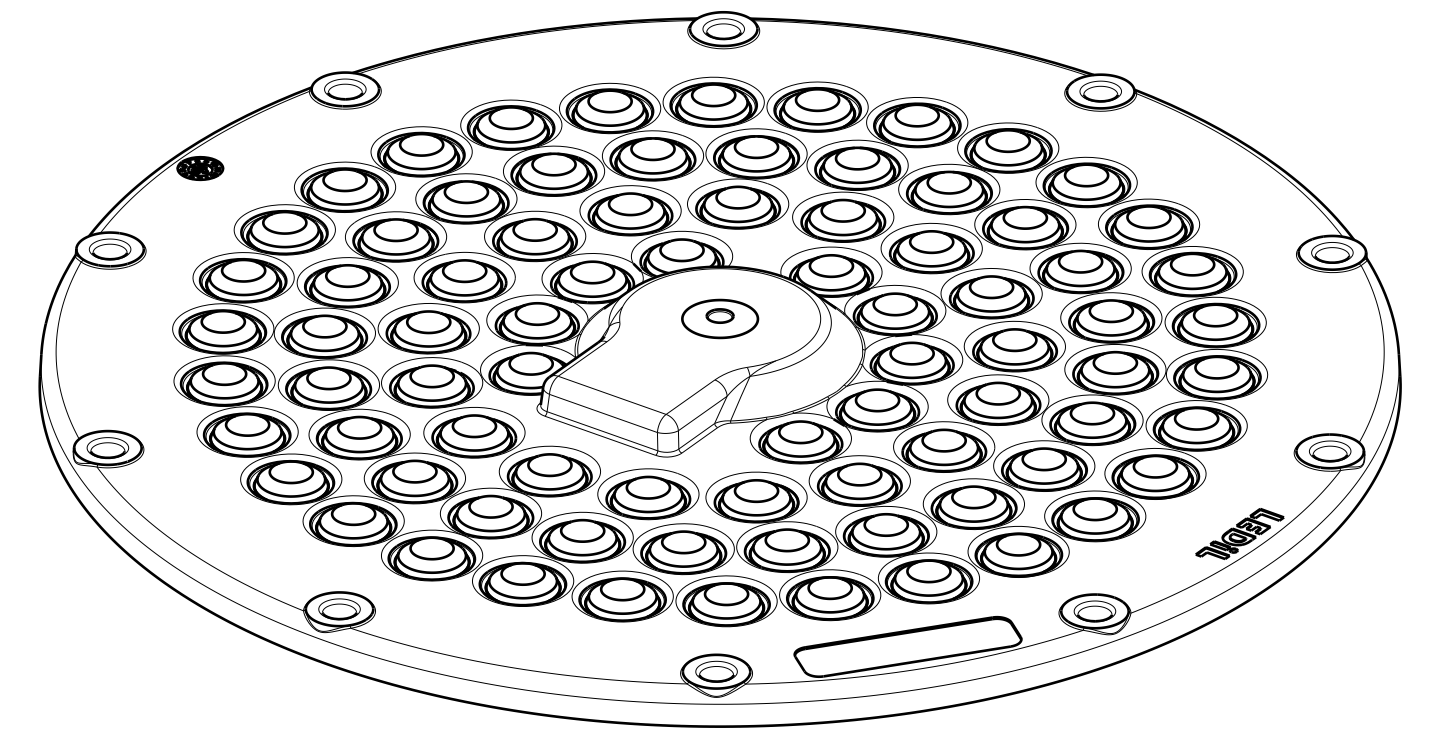
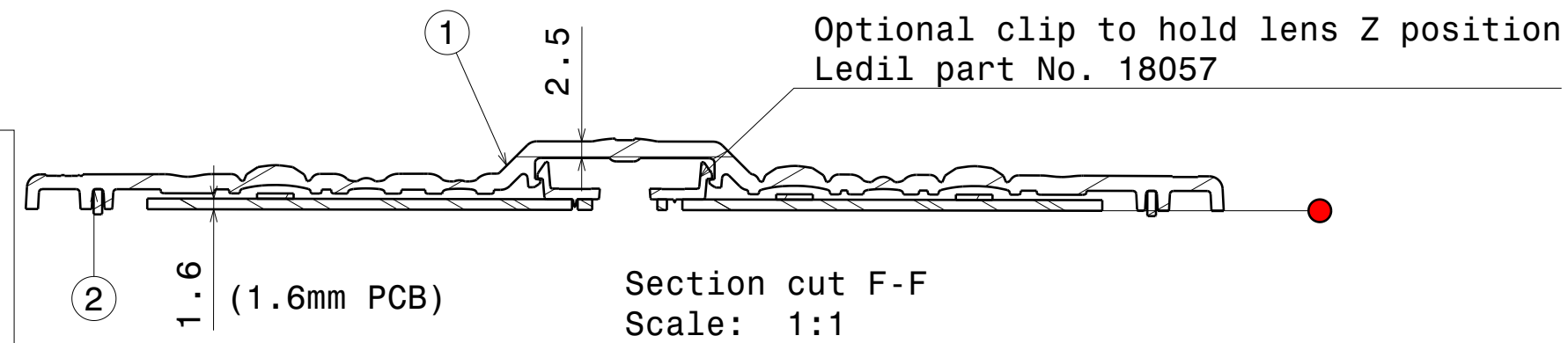


Auxiliary view C  
Scale: 1:1

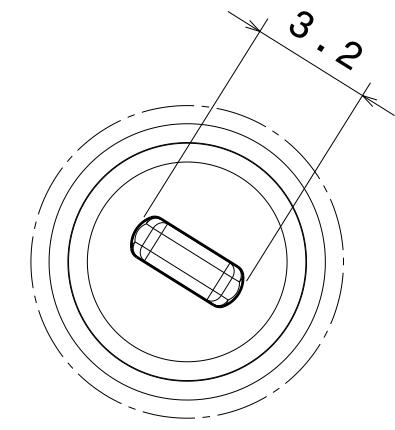


Isometric View  
Scale: 1:1

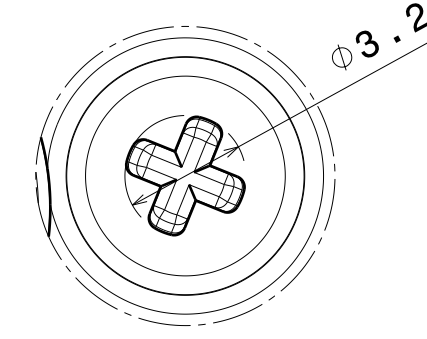


Section cut F-F  
Scale: 1:1

Silicone seal is tested to work in LEDiL test assemblies. Customer is recommended to test the sealing in the end product due many variables, such as heat sink surface and possible chemical traces

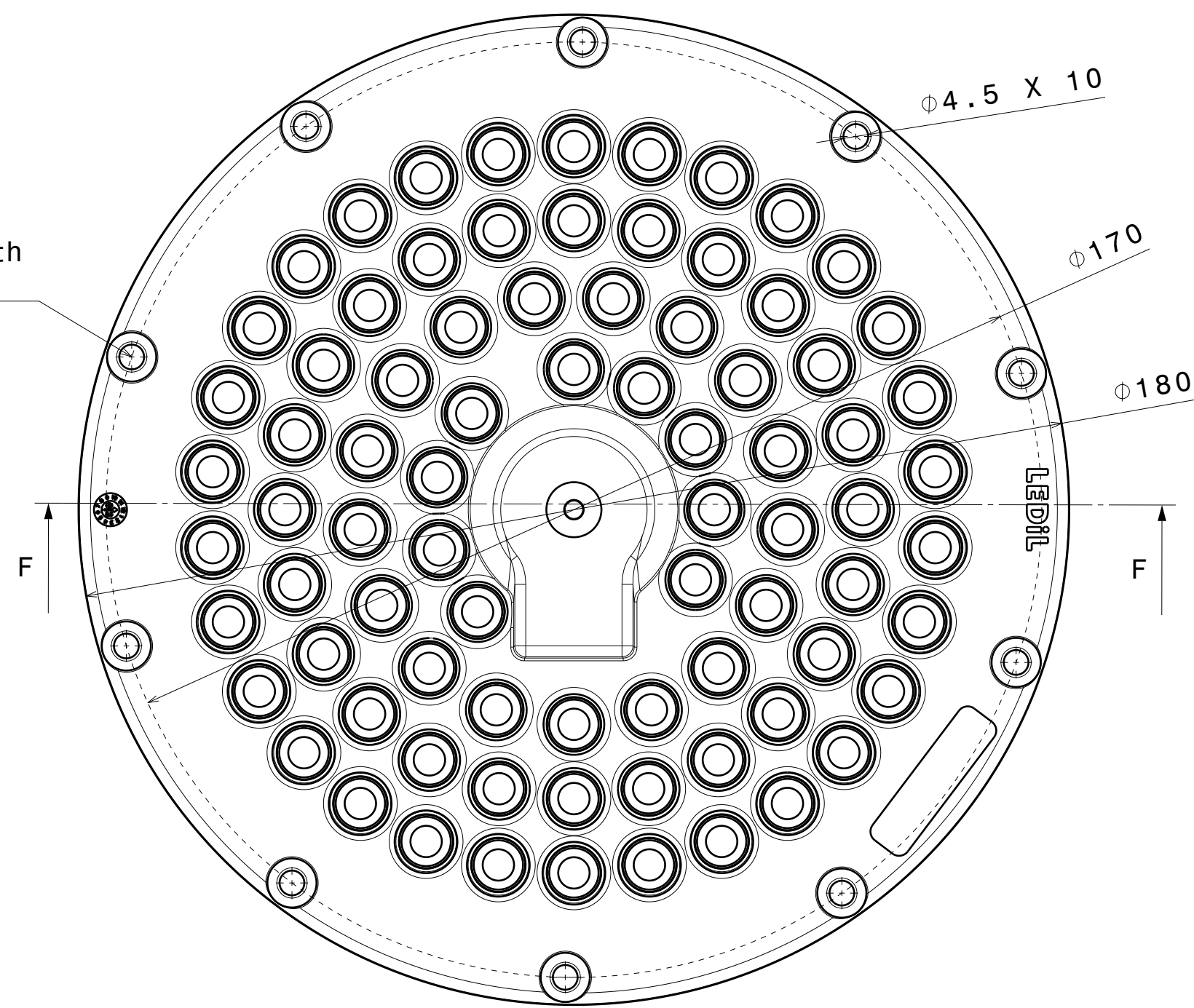


Detail E  
Scale: 5:1

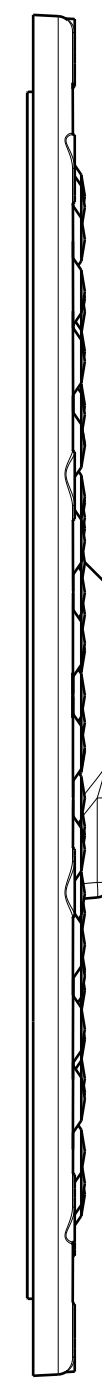


Detail D  
Scale: 5:1

Recommended torque with pan head screw: 0,6Nm

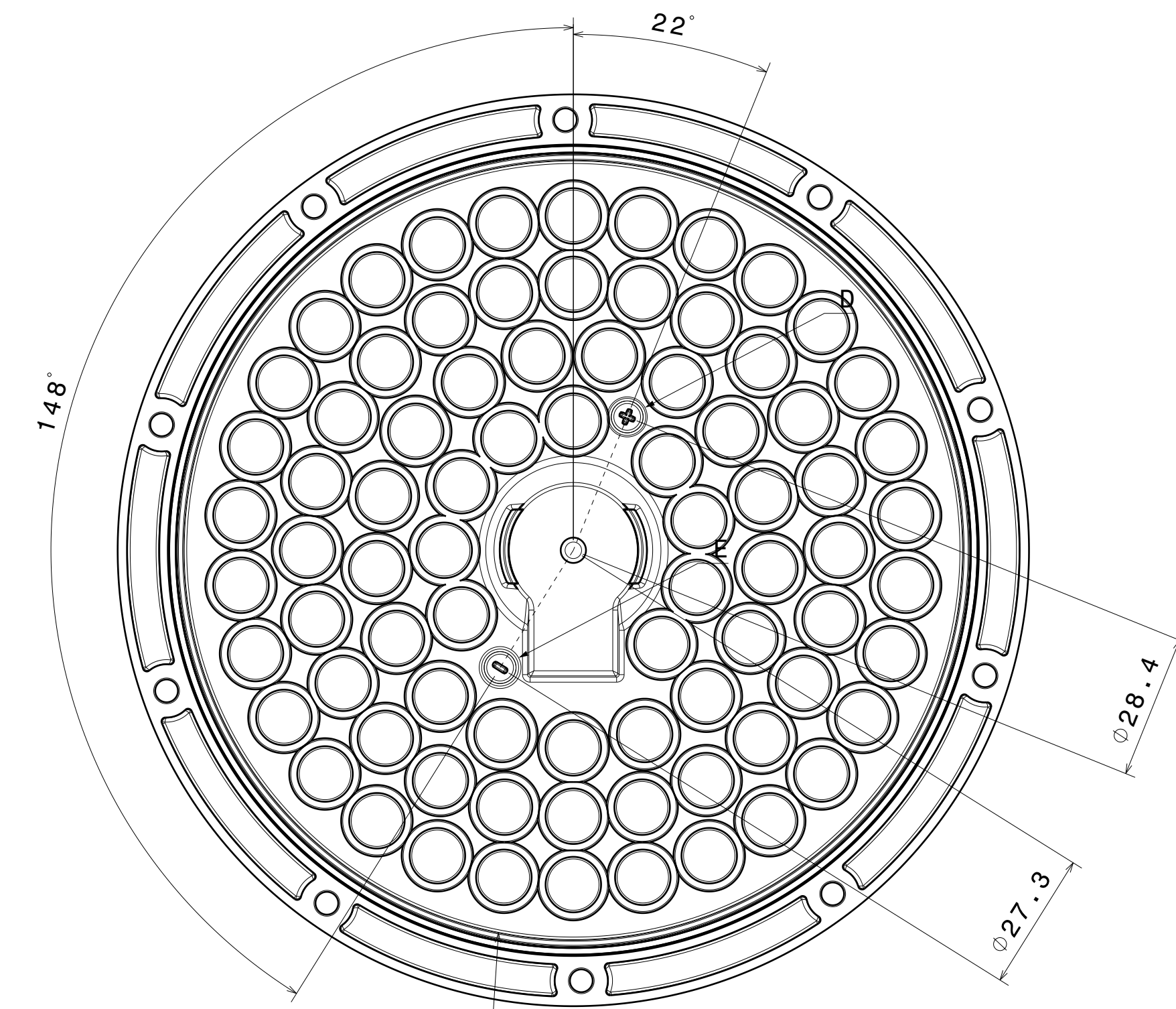


Top View  
Scale: 1:1



Auxiliary view A  
Scale: 1:1

Wiring:  
PCB is fully sealed between the lens with silicone seal and the heatsink. Wiring needs to be done through the PCB and heatsink to maintain IP rating



Auxiliary view B  
Scale: 1:1

Notes

- PCB or heatsink level.
- LED location
- Ensure LED fitting from a product specific 3D model available from [www.ledil.com](http://www.ledil.com)
- For more details about installation please see LEDiL Installation Guide on [www.ledil.com](http://www.ledil.com)

CS17978\_VICTORIA-MINI-WWW\_

COMPONENTS

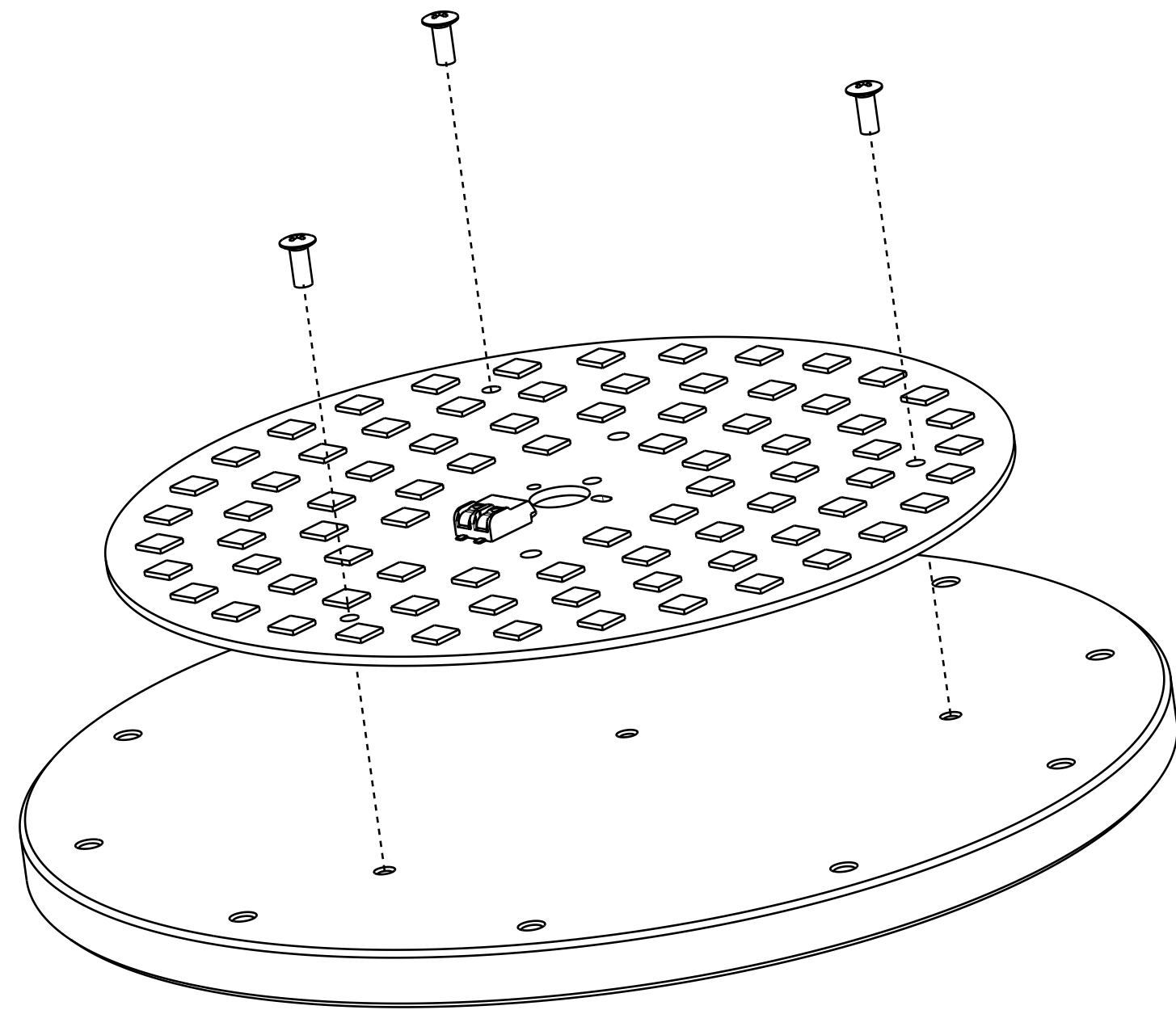
INDEX	PART	TYPE	MATERIAL	COLOR / COATING
1	C17974_VICTORIA-MINI-WWW		PMMA	Clear
2	C17976_VICTORIA-MINI-SEAL		Silicone	

MECHANICAL DRAWING

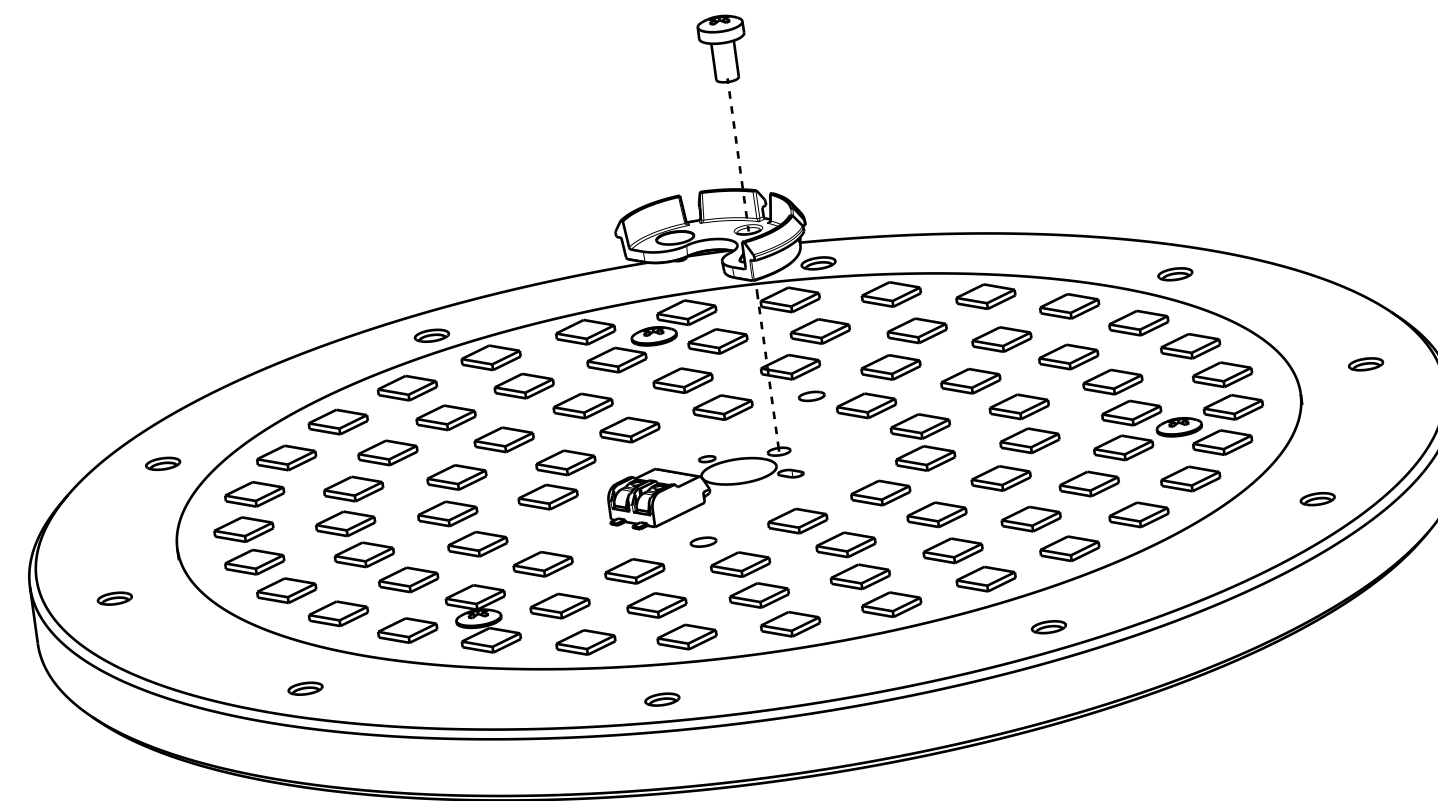
PRODUCT			
SCALE	1:1	WEIGHT	
Plastic moulding general tolerances according to DIN 16901-130 and applies if not otherwise shown in the drawing. Silicone moulding general tolerances according to ISO 3302-1 Class M3 and applies if not otherwise shown in the drawing.		FIRST ANGLE PROJECTION:	This drawing is the property of LEDiL Oy. It may not be copied or otherwise distributed without prior written permission from LEDiL Oy.
SCALE	1:1	WEIGHT	89,1g
A1	SHEET		1/1



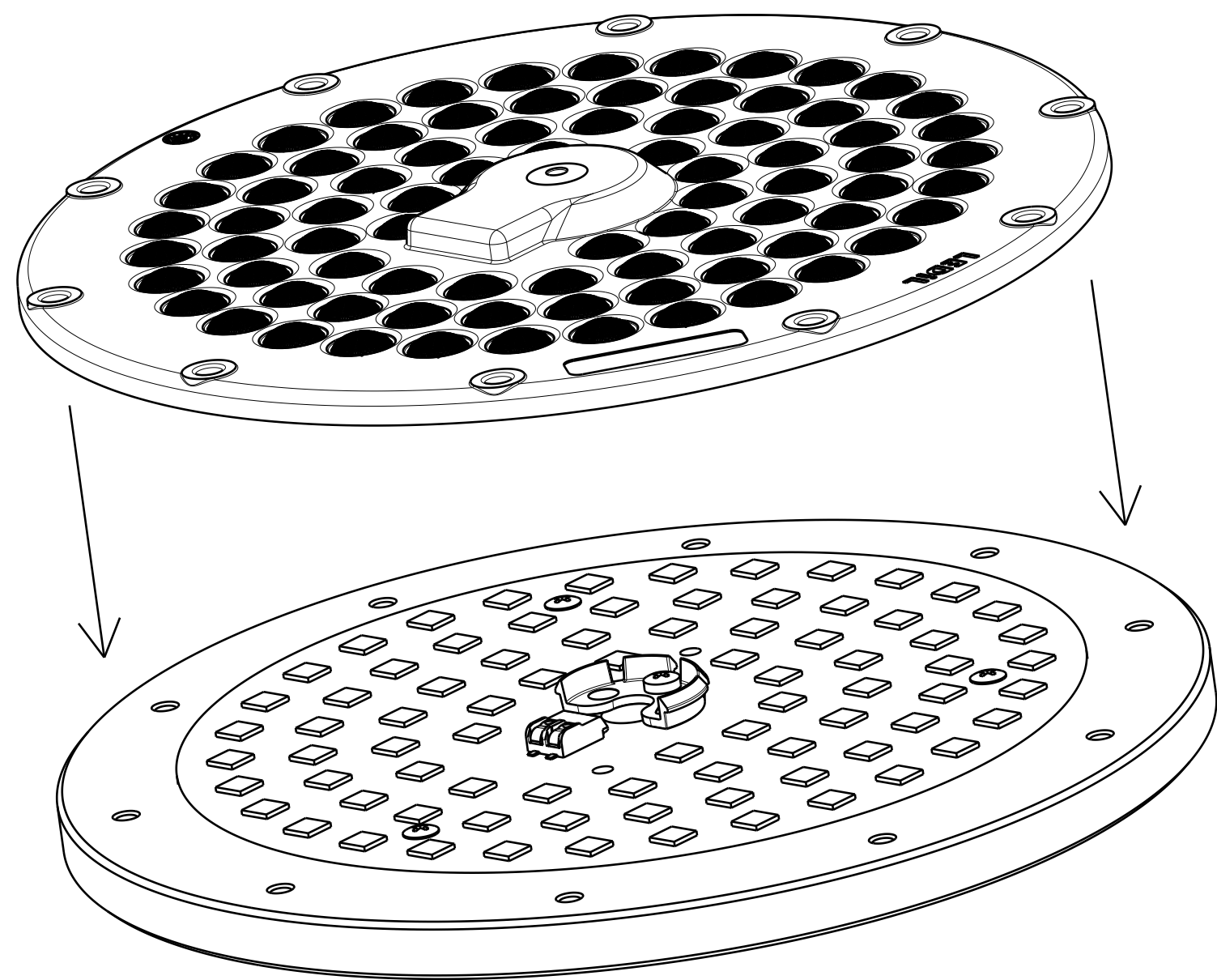
1. Install PCB with M3 countersunk screws



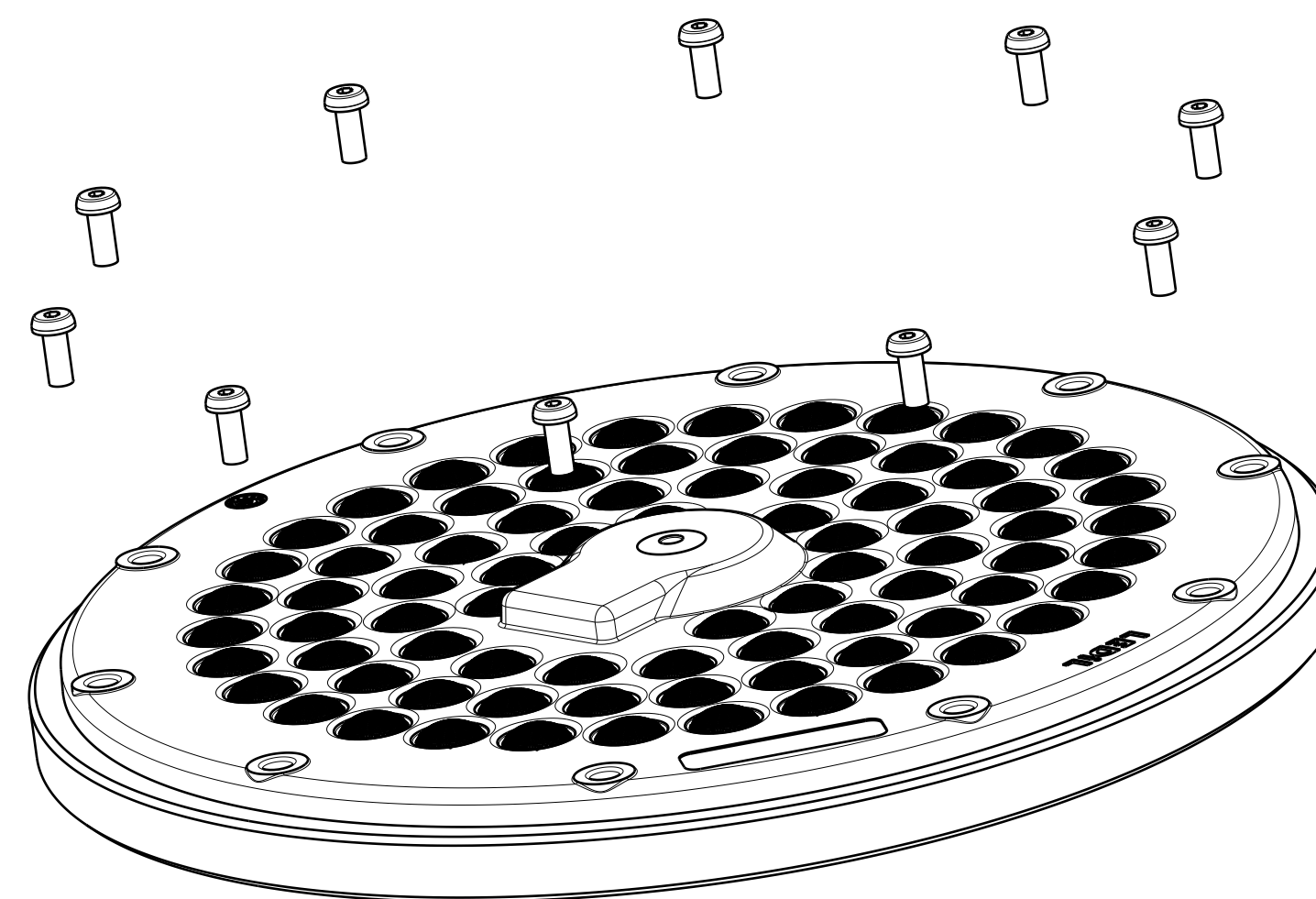
2. Install Clip with M3 screw

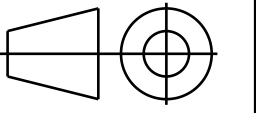


3. Push lens down to clip and rotate position pins to match corresponding holes in PCB



4. Fix the lens with M4 screws



<b>MECHANICAL DRAWING</b>		<b>LEDiL</b> <sup>®</sup>
PRODUCT	VICTORIA-MINI	
<small>Plastic moulding general tolerances according to DIN 16901-130 and applies if not otherwise shown in the drawing. Silicone moulding general tolerances according to ISO 3302-1 Class M3 and applies if not otherwise shown in the drawing.</small>	<small>FIRST ANGLE PROJECTION:</small> 	<small>This drawing is the property of LEDiL Oy. It may not be copied or otherwise distributed without prior written permission from LEDiL Oy.</small>
SCALE	1:1	A1 SHEET 1/1
	WEIGHT	-