

SOLDER-CLIP-A

Reel with solder clips compatible with TINA-SC and LEILA-SC lenses

SPECIFICATION:

Dimensions	5.0 x 4.0 mm
Height	5 mm
ROHS compliant	yes ⓘ

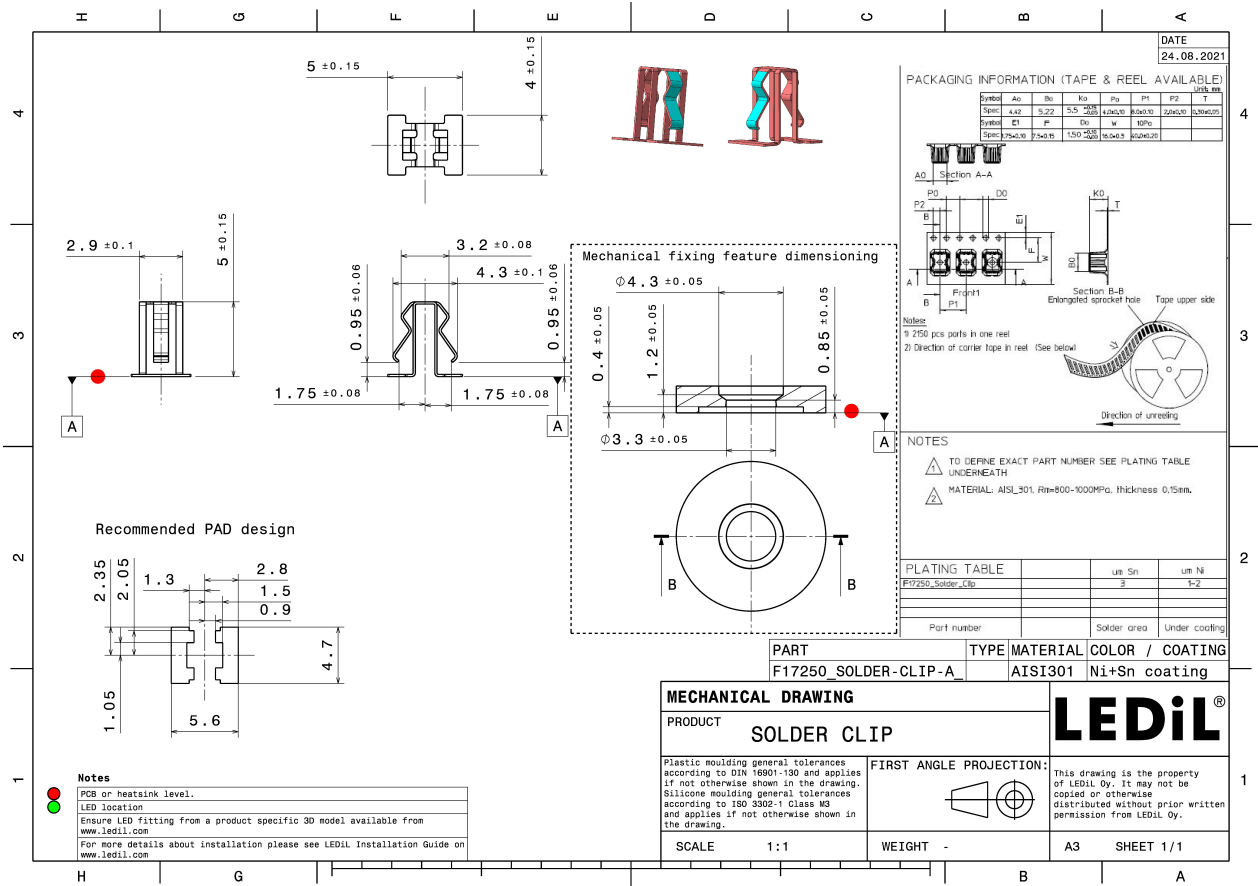


MATERIALS:

Component	Type	Material	Colour	Finish
SOLDER-CLIP-A	Accessory	Stainless steel	metal	

ORDERING INFORMATION:

Component	Qty in box	MOQ	MPQ	Box weight (kg)
F17250_SOLDER-CLIP-A » Box size: 400 x 400 x 300 mm	30100	2150	2150	7.8



See also our general installation guide: www.ledil.com/installation_guide

AVAILABLE LEDiL PRODUCTS:

Product name	Description
CP17587_LEILA-SC-RS	~9.6° spot beam
CP17588_LEILA-SC-D	~14° diffused spot beam
CP17589_LEILA-SC-M	~25° wide beam
CP17590_LEILA-SC-O-90	~10° x 40° oval beam
CP17591_LEILA-SC-W	~40° wide beam
CP17592_LEILA-SC-O-WAS	Asymmetric beam for wall-washing
CP17593_TINA-SC-D	~16° diffused spot beam
CP17594_TINA-SC-RS	~14° spot beam
CP17595_TINA-SC-M	~30° wide beam
CP17596_TINA-SC-O	~35° + 15° oval beam
CP17597_TINA-SC-W	~45° wide beam
CP17598_TINA-SC-O-WAS	Asymmetric beam for wall-washing
CP18760_LEILA-SC-OW-90	~30° x 55° oval beam
CP18761_LEILA-SC-WW	~55° wide beam.
CP19303_LEILA-Y-SC-RS	~10° spot beam.
CP19310_LEILA-Y-SC-SS	~14° smooth spot beam

GENERAL INFORMATION:

NOTE: The typical beam angle will be changed by different color, chip size and chip position tolerance. The typical total beam angle is the full angle measured where the luminous intensity is half of the peak value.

MATERIALS:

As part of our continuous research and improvement processes, and to ensure the best possible quality and availability of our products, LEDiL reserves the right to change material grades without notice.

PRODUCT DATA USER AGREEMENT AND DISCLAIMER:

The measured data in the provided downloadable LEDiL Product Datasheets and Mechanical 2D-Drawings is rounded and provided as reference for planning. LEDiL Oy's optical specifications have been verified by conducting performance testing of the products in accordance with the company's quality system. The reported data are averaged results of multiple measurements with typical variation. LEDiL Oy reserves the right to without prior notification make changes and improvements to its products.

LEDiL Oy assumes neither warranty, nor guarantee nor any other liability of any kind for the contents and correctness of the provided data. The provided data has been generated with highest diligence but the provided data may in reality not represent the complete possible variation range of all intrinsic parameters. Therefore, in certain cases a deviation from the provided data could occur.

LEDiL Oy reserves the right to undertake technical changes of its products without further notification which could lead to changes in the provided data. LEDiL Oy assumes no liability of any kind for the possible deviation from any provided data or any other damage resulting from the usage of the provided data.

The user agrees to this disclaimer and user agreement with the download or usage of the provided files.

LEDiL Oy

Joensuunkatu 13
FI-24240 SALO
Finland

LEDiL Inc.

228 West Page Street
Suite D
Sycamore IL 60178
USA

Ledil Optics Technology (Shenzhen) Co., Ltd.

405 , Block B
Casic Motor Building
Shenzhen 518057
P.R.CHINA

Local sales and technical support

[www.ledil.com/
where_to_buy](http://www.ledil.com/where_to_buy)

Shipping locations

Salo, Finland
Hong Kong, China

Distribution Partners

[www.ledil.com/
where_to_buy](http://www.ledil.com/where_to_buy)