

STRADA-2X2-FS3-PC

Forward throw beam optimized for European tunnels, resulting in extremely efficient lighting with counter-beam method. Variant made from PC.

SPECIFICATION:

Dimensions	50.0 x 50.0 mm
Height	12 mm
Fastening	pin, screw
ROHS compliant	yes ⓘ

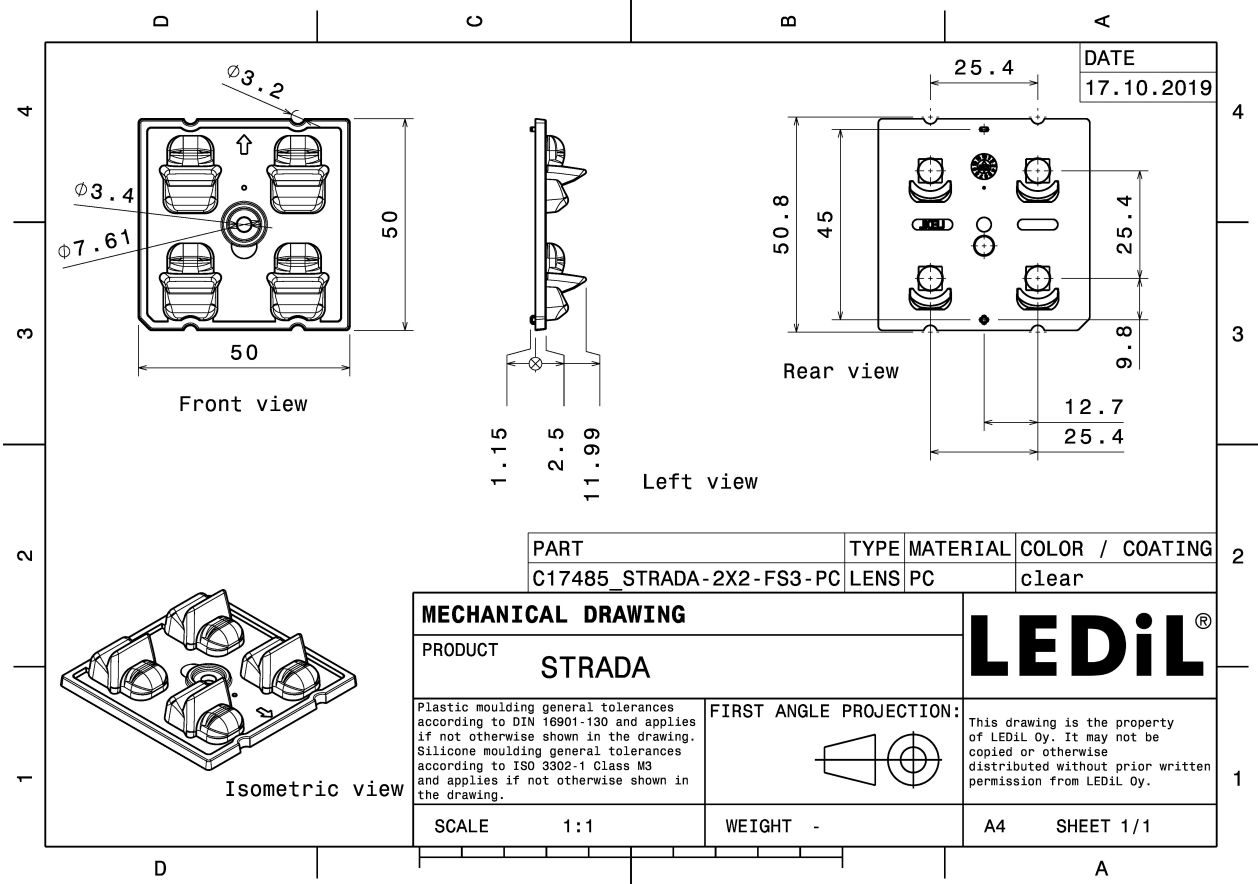


MATERIALS:

Component	Type	Material	Colour	Finish	Length
STRADA-2X2-FS3-PC	Multi-lens	PC	clear		50.0

ORDERING INFORMATION:

Component	Qty in box	MOQ	MPQ	Box weight (kg)
C17485_STRADA-2X2-FS3-PC » Box size: 480 x 280 x 300 mm	800	160	160	7.1

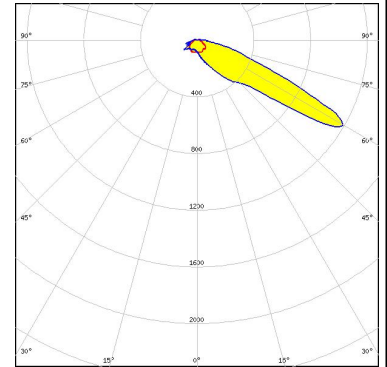


See also our general installation guide: www.ledil.com/installation_guide

OPTICAL RESULTS (MEASURED):



LED	XP-G3
FWHM / FWTM	Asymmetric
Efficiency	86 %
Peak intensity	1.5 cd/lm
LEDs/each optic	1
Light colour/type	White
Required components:	



Light distribution files

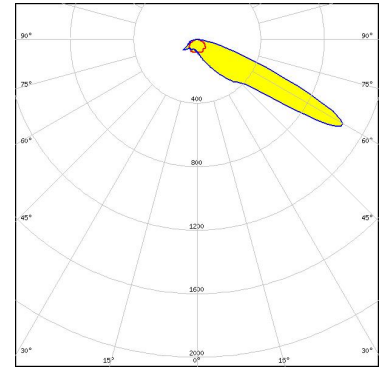
OPTICAL RESULTS (SIMULATED):



LED XP-G3
 FWHM / FWTM Asymmetric
 Efficiency 71 %
 Peak intensity 1.1 cd/lm
 LEDs/each optic 1
 Light colour/type White
 Required components:

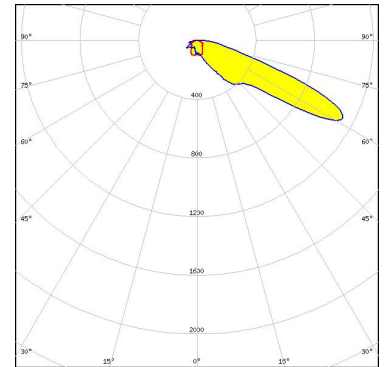
Protective plate, glass

Light distribution files



LED XP-L2
 FWHM / FWTM Asymmetric
 Efficiency 75 %
 Peak intensity 1.1 cd/lm
 LEDs/each optic 1
 Light colour/type White
 Required components:

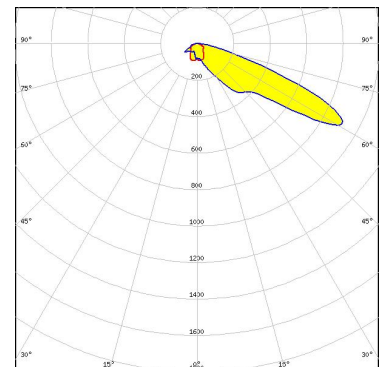
Light distribution files



LED XP-L2
 FWHM / FWTM Asymmetric
 Efficiency 62 %
 Peak intensity 0.9 cd/lm
 LEDs/each optic 1
 Light colour/type White
 Required components:

Protective plate, glass

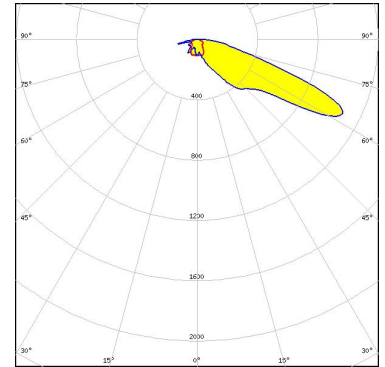
Light distribution files



OPTICAL RESULTS (SIMULATED):

SAMSUNG

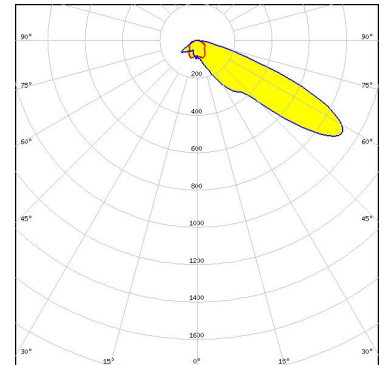
LED LH351D
FWHM / FWTM Asymmetric
Efficiency 80 %
Peak intensity 1.1 cd/lm
LEDs/each optic 1
Light colour/type White
Required components:



Light distribution files

SAMSUNG

LED LH502D
FWHM / FWTM Asymmetric
Efficiency 66 %
Peak intensity 0.9 cd/lm
LEDs/each optic 1
Light colour/type White
Required components:

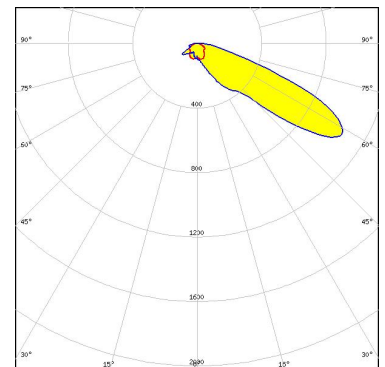


Light distribution files

Protective plate, glass

SAMSUNG

LED LH502D
FWHM / FWTM Asymmetric
Efficiency 77 %
Peak intensity 1.1 cd/lm
LEDs/each optic 1
Light colour/type White
Required components:



Light distribution files

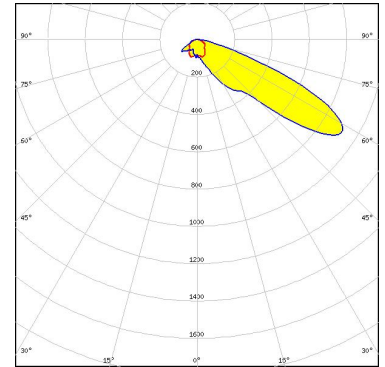
OPTICAL RESULTS (SIMULATED):

TRIDONIC

LED	RLE 2x4 3000lm HP HE EXC3 OTD
FWHM / FWTM	Asymmetric
Efficiency	66 %
Peak intensity	0.9 cd/lm
LEDs/each optic	1
Light colour/type	White
Required components:	

Protective plate, glass

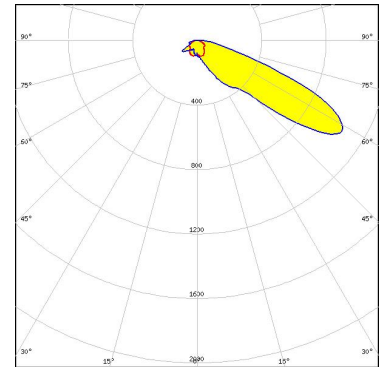
Light distribution files



TRIDONIC

LED	RLE 2x4 3000lm HP HE EXC3 OTD
FWHM / FWTM	Asymmetric
Efficiency	77 %
Peak intensity	1.1 cd/lm
LEDs/each optic	1
Light colour/type	White
Required components:	

Light distribution files



GENERAL INFORMATION:

NOTE: The typical beam angle will be changed by different color, chip size and chip position tolerance. The typical total beam angle is the full angle measured where the luminous intensity is half of the peak value.

MATERIALS:

As part of our continuous research and improvement processes, and to ensure the best possible quality and availability of our products, LEDiL reserves the right to change material grades without notice.

PRODUCT DATA USER AGREEMENT AND DISCLAIMER:

The measured data in the provided downloadable LEDiL Product Datasheets and Mechanical 2D-Drawings is rounded and provided as reference for planning. LEDiL Oy's optical specifications have been verified by conducting performance testing of the products in accordance with the company's quality system. The reported data are averaged results of multiple measurements with typical variation. LEDiL Oy reserves the right to without prior notification make changes and improvements to its products.

LEDiL Oy assumes neither warranty, nor guarantee nor any other liability of any kind for the contents and correctness of the provided data. The provided data has been generated with highest diligence but the provided data may in reality not represent the complete possible variation range of all intrinsic parameters. Therefore, in certain cases a deviation from the provided data could occur.

LEDiL Oy reserves the right to undertake technical changes of its products without further notification which could lead to changes in the provided data. LEDiL Oy assumes no liability of any kind for the possible deviation from any provided data or any other damage resulting from the usage of the provided data.

The user agrees to this disclaimer and user agreement with the download or usage of the provided files.

LEDiL Oy

Joensuunkatu 13
FI-24240 SALO
Finland

LEDiL Inc.

228 West Page Street
Suite D
Sycamore IL 60178
USA

Ledil Optics Technology (Shenzhen) Co., Ltd.

405 , Block B
Casic Motor Building
Shenzhen 518057
P.R.CHINA

Local sales and technical support

[www.ledil.com/
where_to_buy](http://www.ledil.com/where_to_buy)

Shipping locations

Poznan, Poland
Hong Kong, China

Distribution Partners

[www.ledil.com/
where_to_buy](http://www.ledil.com/where_to_buy)