

## SOLDER-CLIP-2

Reel with 2nd generation of solder clips compatible with LEILA-Y-SC2 lenses

### SPECIFICATION:

Dimensions	7.0 x 3.3 mm
Height	7.8 mm
ROHS compliant	yes ⓘ

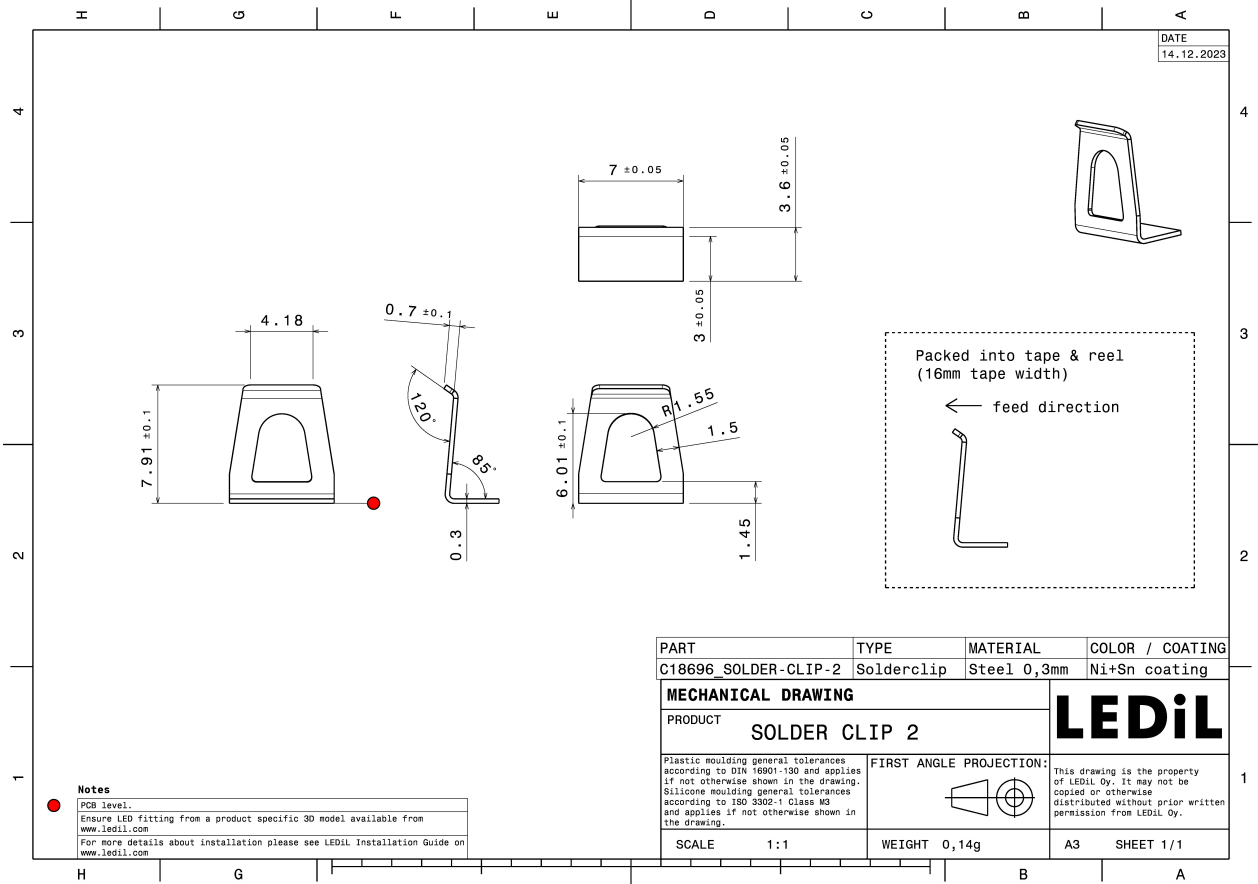


### MATERIALS:

Component	Type	Material	Colour	Finish
SOLDER-CLIP-2	Accessory	AISI301		

### ORDERING INFORMATION:

Component	Qty in box	MOQ	MPQ	Box weight (kg)
C18696_SOLDER-CLIP-2 » Box size: 350 x 350 x 330 mm	9750	650	650	6.5



See also our general installation guide: [www.ledil.com/installation\\_guide](http://www.ledil.com/installation_guide)

## AVAILABLE LEDiL PRODUCTS:

Product name	Description
CP19438_LEILA-Y-SC2-RS	~10° spot beam. Assembly with black SC2-holder
CP19439_LEILA-Y-SC2-SS	~14° smooth spot beam. Assembly with black SC2-holder
CP19440_LEILA-Y-SC2-M	~25° medium beam. Assembly with black SC2-holder
CP19441_LEILA-Y-SC2-W	~36° wide beam. Assembly with black SC2-holder
CP19442_LEILA-Y-SC2-WW	~55° wide beam. Assembly with black SC2-holder
CP19443_LEILA-Y-SC2-O	~45° + 15° oval beam. Assembly with black SC2-holder
CP19453_LEILA-Y-SC2-RS-WHT	~10° spot beam. Assembly with white SC2-holder
CP19454_LEILA-Y-SC2-SS-WHT	~14° smooth spot beam. Assembly with white SC2-holder
CP19455_LEILA-Y-SC2-M-WHT	~25° medium beam. Assembly with white SC2-holder
CP19456_LEILA-Y-SC2-W-WHT	~36° wide beam. Assembly with white SC2-holder
CP19457_LEILA-Y-SC2-WW-WHT	~55° wide beam. Assembly with white SC2-holder
CP19458_LEILA-Y-SC2-O-WHT	~45° + 15° oval beam. Assembly with white SC2-holder

#### GENERAL INFORMATION:

NOTE: The typical beam angle will be changed by different color, chip size and chip position tolerance. The typical total beam angle is the full angle measured where the luminous intensity is half of the peak value.

#### MATERIALS:

As part of our continuous research and improvement processes, and to ensure the best possible quality and availability of our products, LEDiL reserves the right to change material grades without notice.

#### PRODUCT DATA USER AGREEMENT AND DISCLAIMER:

The measured data in the provided downloadable LEDiL Product Datasheets and Mechanical 2D-Drawings is rounded and provided as reference for planning. LEDiL Oy's optical specifications have been verified by conducting performance testing of the products in accordance with the company's quality system. The reported data are averaged results of multiple measurements with typical variation. LEDiL Oy reserves the right to without prior notification make changes and improvements to its products.

LEDiL Oy assumes neither warranty, nor guarantee nor any other liability of any kind for the contents and correctness of the provided data. The provided data has been generated with highest diligence but the provided data may in reality not represent the complete possible variation range of all intrinsic parameters. Therefore, in certain cases a deviation from the provided data could occur.

LEDiL Oy reserves the right to undertake technical changes of its products without further notification which could lead to changes in the provided data. LEDiL Oy assumes no liability of any kind for the possible deviation from any provided data or any other damage resulting from the usage of the provided data.

The user agrees to this disclaimer and user agreement with the download or usage of the provided files.

#### LEDiL Oy

Joensuunkatu 13  
FI-24240 SALO  
Finland

#### LEDiL Inc.

228 West Page Street  
Suite D  
Sycamore IL 60178  
USA

#### Ledil Optics Technology (Shenzhen) Co., Ltd.

# 405 , Block B  
Casic Motor Building  
Shenzhen 518057  
P.R.CHINA

#### Local sales and technical support

[www.ledil.com/  
where\\_to\\_buy](http://www.ledil.com/where_to_buy)

#### Shipping locations

Salo, Finland  
Hong Kong, China

#### Distribution Partners

[www.ledil.com/  
where\\_to\\_buy](http://www.ledil.com/where_to_buy)