

SOLDER-CLIP-2

Reel with 2nd generation of solder clips for easy lens mounting

SPECIFICATION:

Dimensions	7.0 x 3.3
Height	7.8 mm
ROHS compliant	yes ⓘ

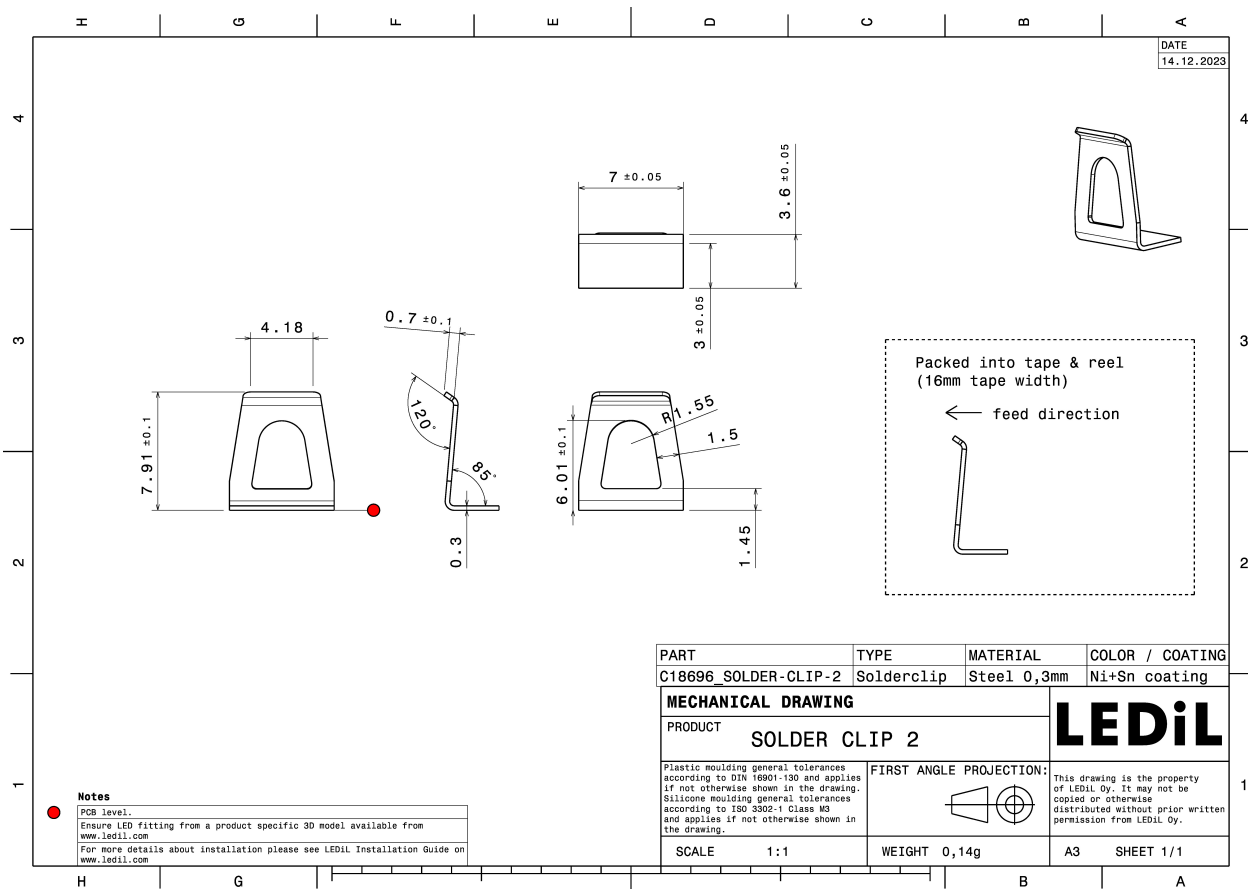


MATERIALS:

Component	Type	Material	Colour	Finish	Length (mm)
SOLDER-CLIP-2	Accessory	AISI301			

ORDERING INFORMATION:

Component	Qty in box	MOQ	MPQ	Box weight (kg)
C18696_SOLDER-CLIP-2 » Box size: 350 x 350 x 330 mm	9750	650	650	6.5



See also our general installation guide: www.ledil.com/installation_guide

AVAILABLE LEDiL PRODUCTS:

Product name	Description
CP19438_LEILA-Y-SC2-RS	~10° spot beam. Assembly with black SC2-holder.
CP19439_LEILA-Y-SC2-SS	~14° smooth spot beam. Assembly with black SC2-holder.
CP19440_LEILA-Y-SC2-M	~25° medium beam. Assembly with black SC2-holder.
CP19441_LEILA-Y-SC2-W	~36° wide beam. Assembly with black SC2-holder.
CP19442_LEILA-Y-SC2-WW	~55° wide beam. Assembly with black SC2-holder.
CP19443_LEILA-Y-SC2-O-90	~45° + 15° oval beam. Assembly with black SC2-holder.
CP19453_LEILA-Y-SC2-RS-WHT	~10° spot beam. Assembly with white SC2-holder.
CP19454_LEILA-Y-SC2-SS-WHT	~14° smooth spot beam. Assembly with white SC2-holder.
CP19455_LEILA-Y-SC2-M-WHT	~25° medium beam. Assembly with white SC2-holder.
CP19456_LEILA-Y-SC2-W-WHT	~36° wide beam. Assembly with white SC2-holder.
CP19457_LEILA-Y-SC2-WW-WHT	~55° wide beam. Assembly with white SC2-holder.
CP19458_LEILA-Y-SC2-O-90-WHT	~45° + 15° oval beam. Assembly with white SC2-holder.
CP19684_DARCY-4X1-RS	~14° spot beam
CP19685_DARCY-4X1-SS	~16° spot beam
CP19686_DARCY-4X1-M	~25° medium beam
CP19687_DARCY-4X1-W	~36° wide beam
CP19688_DARCY-4X1-WW	~55° wide beam
CP19689_DARCY-4X1-O	~45 + 15° oval beam
C19755_SPORT-SQ-SC2-FT6	Narrow forward throw beam with optimised cut-off for high masts.
C19756_SPORT-SQ-SC2-FT6W	Wide forward throw beam with optimized cut-off for high masts.
CP19890_DARCY-4X1-WWW	~75° wide beam
LP20034_LEILA-SC2-RS	~9.6° spot beam. Assembly with black SC2-holder.
LP20035_LEILA-SC2-D	~14° diffused spot beam. Assembly with black SC2-holder.
LP20036_LEILA-SC2-M	~25° wide beam. Assembly with black SC2-holder.
LP20037_LEILA-SC2-W	~40° wide beam. Assembly with black SC2-holder.
LP20038_LEILA-SC2-WW	~50° wide beam. Assembly with black SC2-holder.
LP20039_LEILA-SC2-O-90-WAS	Asymmetric beam for wall-washing. Assembly with black SC2-holder.
LP20042_LEILA-SC2-RS-WHT	~9.6° spot beam. Assembly with white SC2-holder.

LP20044_LEILA-SC2-M-WHT	~25° wide beam. Assembly with white SC2-holder.
LP20045_LEILA-SC2-W-WHT	~40° wide beam. Assembly with white SC2-holder.
LP20046_LEILA-SC2-WW-WHT	~50° wide beam. Assembly with white SC2-holder.

AVAILABLE LEDiL PRODUCTS:

Product name	Description
LP20047_LEILA-SC2-O-90-WAS-WHT	Asymmetric beam for wall-washing. Assembly with white SC2-holder.
LP20048_LEILA-SC2-O-90-WHT	~45° + 15° oval beam. Variant with beam direction rotated 90°. White version.
LP20049_LEILA-SC2-OW-90-WHT	~50° + 30° oval beam. Variant with beam direction rotated 90°. Assembly with white SC2-holder.
LP20052_LAURA-SC2-RS-BLK	~8° spot beam. Assembly with black SC2 holder.
LP20053_LAURA-SC2-D-BLK	~15° diffused spot beam. Assembly with black SC2 holder.
LP20054_LAURA-SC2-SS-BLK	~11° smooth spot beam. Assembly with black SC2 holder.
LP20055_LAURA-SC2-M-BLK	~30° medium beam. Assembly with black SC2 holder.
LP20056_LAURA-SC2-W-BLK	~40° wide beam. Assembly with black SC2 holder.
LP20057_LAURA-SC2-WW-BLK	~65° wide beam. Assembly with black SC2 holder.
LP20058_LAURA-SC2-R-XW-BLK	Mini reflector with ~72° wide beam. Assembly with black SC2 holder.
LP20059_LAURA-SC2-O-BLK	~40° x 12° oval beam. Assembly with black SC2 holder.
LP20060_LAURA-SC2-SS-WAS-BLK	Asymmetric beam for wall-washing. Assembly with black SC2 holder.
LP20061_LAURA-SC2-O-WAS-BLK	Oval beam for wall-washing. Assembly with black SC2 holder.
LP20062_LAURA-SC2-RS-WHT	~8° spot beam. Assembly with white SC2 holder.
LP20063_LAURA-SC2-D-WHT	~15° diffused spot beam. Assembly with white SC2 holder.
LP20064_LAURA-SC2-SS-WHT	~11° smooth spot beam. Assembly with white SC2 holder.
LP20065_LAURA-SC2-M-WHT	~30° medium beam. Assembly with white SC2 holder.
LP20066_LAURA-SC2-W-WHT	~40° wide beam. Assembly with white SC2 holder.
LP20067_LAURA-SC2-WW-WHT	~65° wide beam. Assembly with white SC2 holder.
LP20068_LAURA-SC2-R-XW-WHT	Mini reflector with ~72° wide beam. Assembly with white SC2 holder.
LP20069_LAURA-SC2-O-WHT	~40° x 12° oval beam. Assembly with white SC2 holder.
LP20070_LAURA-SC2-SS-WAS-WHT	Asymmetric beam for wall-washing. Assembly with white SC2 holder.
LP20071_LAURA-SC2-O-WAS-WHT	Oval beam for wall-washing. Assembly with white SC2 holder.
LP20073_LAURA-SC2-O-90-WHT	~40° x 15° oval beam. Variant with beam direction rotated 90°. Assembly with white SC2 holder.

AVAILABLE LEDiL PRODUCTS:

Product name	Description
LP20074_LAURA-SC2-O-90-BLK	~40° x 15° oval beam. Variant with beam direction rotated 90°. Assembly with black SC2 holder.
LP20169_TINA-Y-SC2-RS	~14° spot beam. Assembly with black SC2-holder.
LP20170_TINA-Y-SC2-SS	~14° smooth spot beam. Assembly with black SC2-holder.
LP20171_TINA-Y-SC2-M	~25° medium beam. Assembly with black SC2-holder.
LP20172_TINA-Y-SC2-W	~36° wide beam. Assembly with black SC2-holder.
LP20173_TINA-Y-SC2-WW	~55° wide beam. Assembly with black SC2-holder.
LP20174_TINA-Y-SC2-WWW	~75° wide beam. Assembly with white SC2-holder.
LP20175_TINA-Y-SC2-O	~45° + 15° oval beam. Assembly with black SC2 holder.
LP20176_TINA-Y-SC2-RS-WHT	~10° spot beam. Assembly with white SC2-holder.
LP20177_TINA-Y-SC2-SS-WHT	~14° smooth spot beam. Assembly with white SC2-holder.
LP20178_TINA-Y-SC2-M-WHT	~25° medium beam. Assembly with white SC2-holder.
LP20179_TINA-Y-SC2-W-WHT	~36° wide beam. Assembly with white SC2-holder.
LP20180_TINA-Y-SC2-WW-WHT	~55° wide beam. Assembly with white SC2-holder.
LP20181_TINA-Y-SC2-WWW-WHT	~75° wide beam. Assembly with white SC2-holder.
LP20182_TINA-Y-SC2-O-WHT	~45° + 15° oval beam. Assembly with white SC2 holder.
LP20183_TINA-SC2-RS	~13° spot beam. Assembly with black SC2 holder.
LP20184_TINA-SC2-D	~16° diffused spot beam. Assembly with black SC2 holder.
LP20185_TINA-SC2-M	~30° medium beam. Assembly with black SC2 holder.
LP20186_TINA-SC2-W	~50° wide beam. Assembly with black SC2-holder.
LP20187_TINA-SC2-O	~35° x 15° oval beam. Assembly with black SC2 holder.
LP20188_TINA-SC2-O-WAS	Oval beam for wall-washing. Assembly with black SC2 holder.
LP20189_TINA-SC2-RS-WHT	~13° spot beam. Assembly with white SC2 holder.
LP20190_TINA-SC2-D-WHT	~16° diffused spot beam. Assembly with white SC2 holder.
LP20191_TINA-SC2-M-WHT	~30° medium beam. Assembly with white SC2 holder.
LP20192_TINA-SC2-W-WHT	~50° wide beam. Assembly with white SC2-holder.
LP20193_TINA-SC2-O-WHT	~35° x 15° oval beam. Assembly with white SC2 holder.
LP20194_TINA-SC2-O-WAS-WHT	Oval beam for wall-washing. Assembly with white SC2 holder.

AVAILABLE LEDiL PRODUCTS:

Product name	Description
--------------	-------------

GENERAL INFORMATION:

NOTE: The typical beam angle will be changed by different color, chip size and chip position tolerance. The typical total beam angle is the full angle measured where the luminous intensity is half of the peak value.

MATERIALS:

As part of our continuous research and improvement processes, and to ensure the best possible quality and availability of our products, LEDiL reserves the right to change material grades without notice.

PRODUCT DATA USER AGREEMENT AND DISCLAIMER:

The measured data in the provided downloadable LEDiL Product Datasheets and Mechanical 2D-Drawings is rounded and provided as reference for planning. LEDiL Oy's optical specifications have been verified by conducting performance testing of the products in accordance with the company's quality system. The reported data are averaged results of multiple measurements with typical variation. LEDiL Oy reserves the right to without prior notification make changes and improvements to its products.

LEDiL Oy assumes neither warranty, nor guarantee nor any other liability of any kind for the contents and correctness of the provided data. The provided data has been generated with highest diligence but the provided data may in reality not represent the complete possible variation range of all intrinsic parameters. Therefore, in certain cases a deviation from the provided data could occur.

LEDiL Oy reserves the right to undertake technical changes of its products without further notification which could lead to changes in the provided data. LEDiL Oy assumes no liability of any kind for the possible deviation from any provided data or any other damage resulting from the usage of the provided data.

The user agrees to this disclaimer and user agreement with the download or usage of the provided files.

LEDiL Oy

Joensuunkatu 7
FI-24100 SALO
Finland

LEDiL Inc.

228 West Page Street
Suite D
Sycamore IL 60178
USA

Ledil Optics Technology (Shenzhen) Co., Ltd.

405 , Block B
Casic Motor Building
Shenzhen 518057
P.R.CHINA

Local sales and technical support

[www.ledil.com/
where_to_buy](http://www.ledil.com/where_to_buy)

Shipping locations

Poznan, Poland
Hong Kong, China

Distribution Partners

[www.ledil.com/
where_to_buy](http://www.ledil.com/where_to_buy)