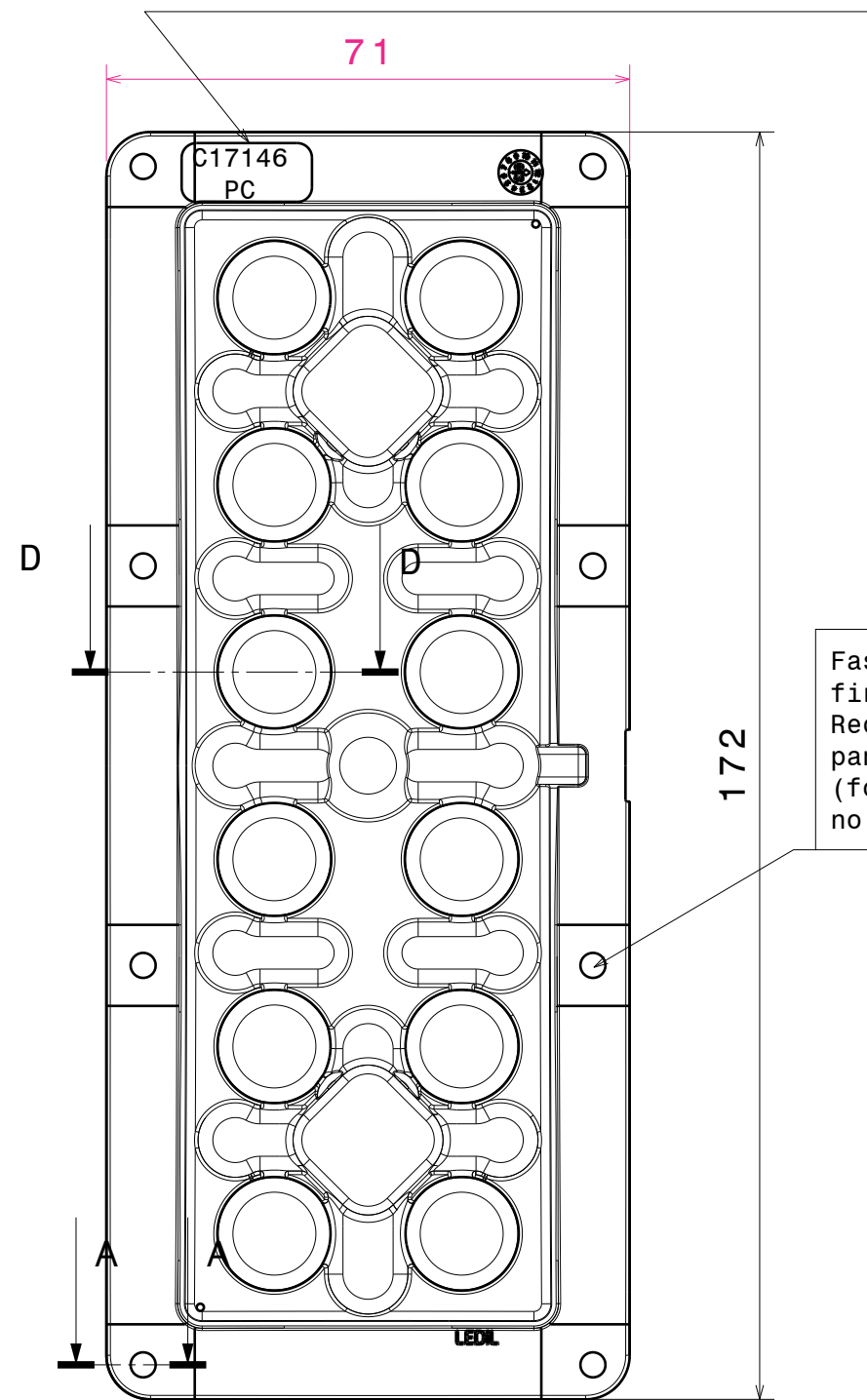


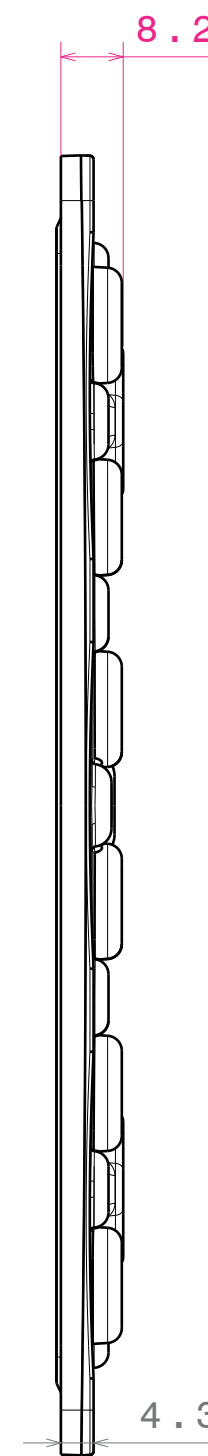
Isometric view
Scale: 1:1

Part number and material marking
in changeable insert
2. C17146 PC

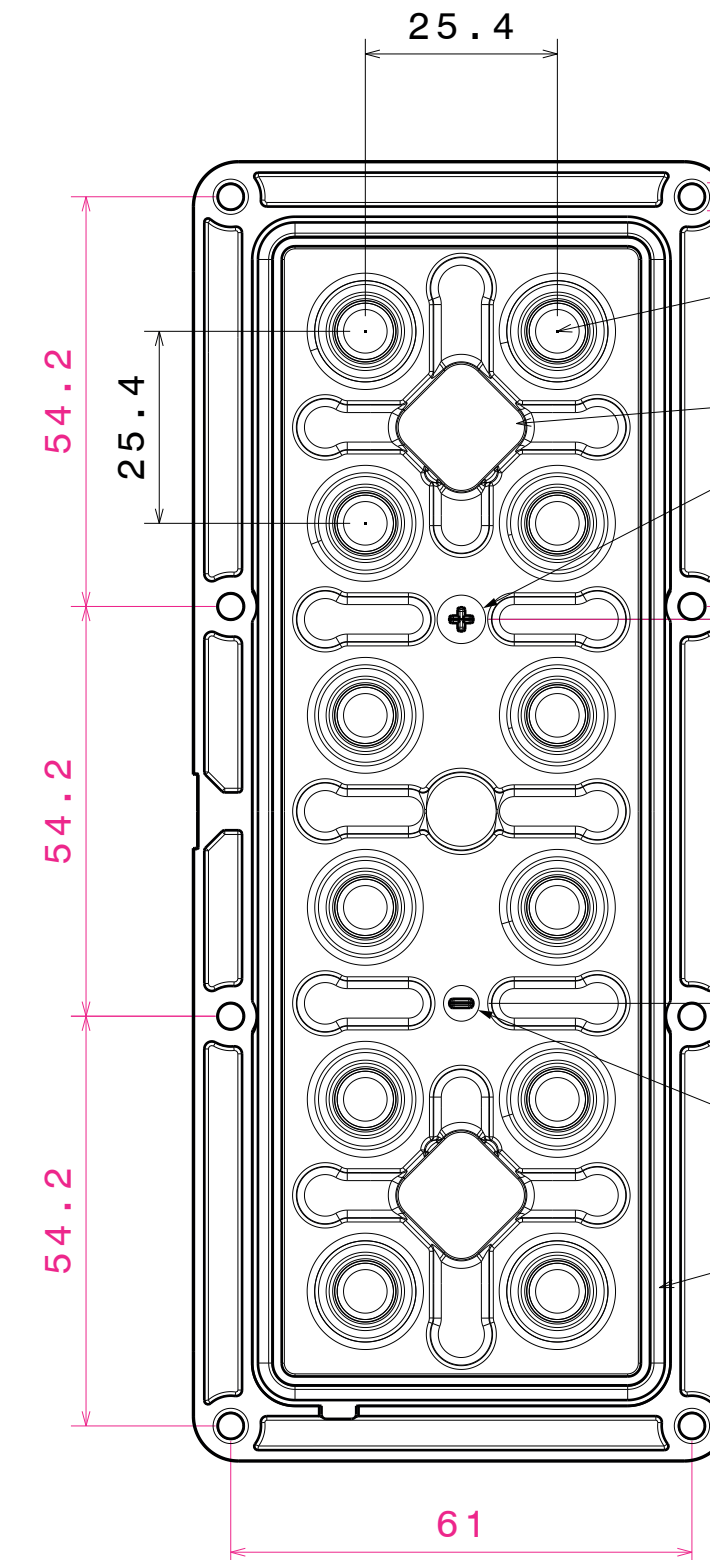


Front view
Scale: 1:1

Fasten middle screws
first.
Recommended torque with
pan head screw: 0.6Nm
(for 1.6mm thick PCB,
no thermal pad)



Left view
Scale: 1:1

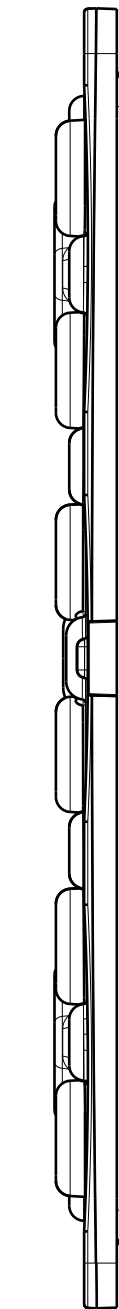


Rear view
Scale: 1:1

● LED position

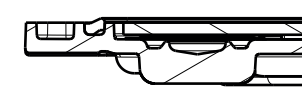
Wire terminal location:
Pocket size 13.5x13.5x5.1mm.

Wiring:
PCB is fully sealed between
the lens with silicone seal
and the heatsink. Wiring
needs to be done through the
PCB and heat sink to
maintain high IP rating.



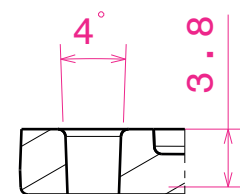
Right view
Scale: 1:1

Silicone seal is tested to work in LEDiL test assemblies. Customer is recommended to test the sealing in the end product due many variables, such as heat sink surface and possible chemical traces



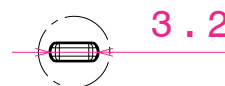
1.6
(1.6mm PCB)

Section view D-D
Scale: 1:1

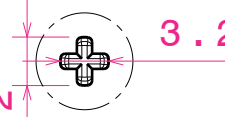


3.4
M3 screw size

Section view A-A
Scale: 2:1



Detail C
Scale: 2:1



Detail B
Scale: 2:1

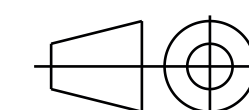
PART	TYPE	MATERIAL	COLOR / COATING
C17146_HB-IP-2X6-G2-WWW-PC		PC	clear
C17066_SEAL-IP-2X6-G2		Silicone	white

MECHANICAL DRAWING

PRODUCT
CS17147_HB-IP-2X6-G2-WWW-PC

Plastic moulding general tolerances according to DIN 16901-130 and applies if not otherwise shown in the drawing. Silicone moulding general tolerances according to ISO 3302-1 Class M3 and applies if not otherwise shown in the drawing.

FIRST ANGLE PROJECTION:



LEDiL[®]

This drawing is the property of LEDiL Oy. It may not be reproduced, copied or communicated without a written agreement with LEDiL Oy.

SCALE 1:1

WEIGHT 40 g

A2 SHEET 1/1

Notes

1	PCB or heatsink level.
2	LED location.
3	Ensure LED fitting from a product specific 3D model available from www.ledil.com.
4	See installation details in page 2.