

DAISY-8X1-M

~35° wide beam

SPECIFICATION:

Dimensions	305.2 x 38.1 mm
Height	20.3 mm
Fastening	pin, screw, clips
ROHS compliant	yes ⓘ

MATERIALS:

Component	Type	Material	Colour	Finish
C17819_DAISY-4X1-M-US	Linear lens	PMMA	clear	
C17172_DAISY-8X1-SHD-MATT-WHT	Shade	PC	white	matt
C17171_DAISY-8X1-SHD-MATT	Shade	PC	black	matt

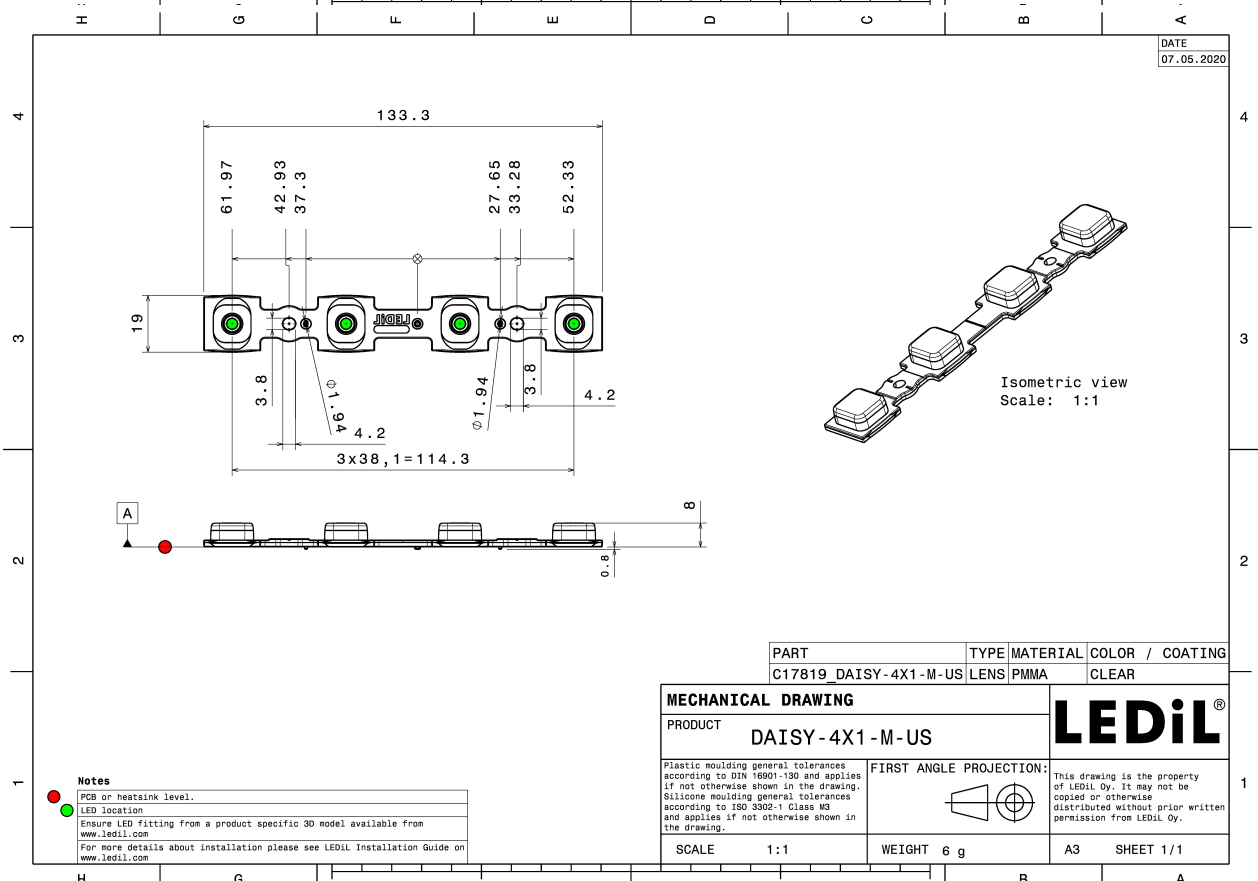
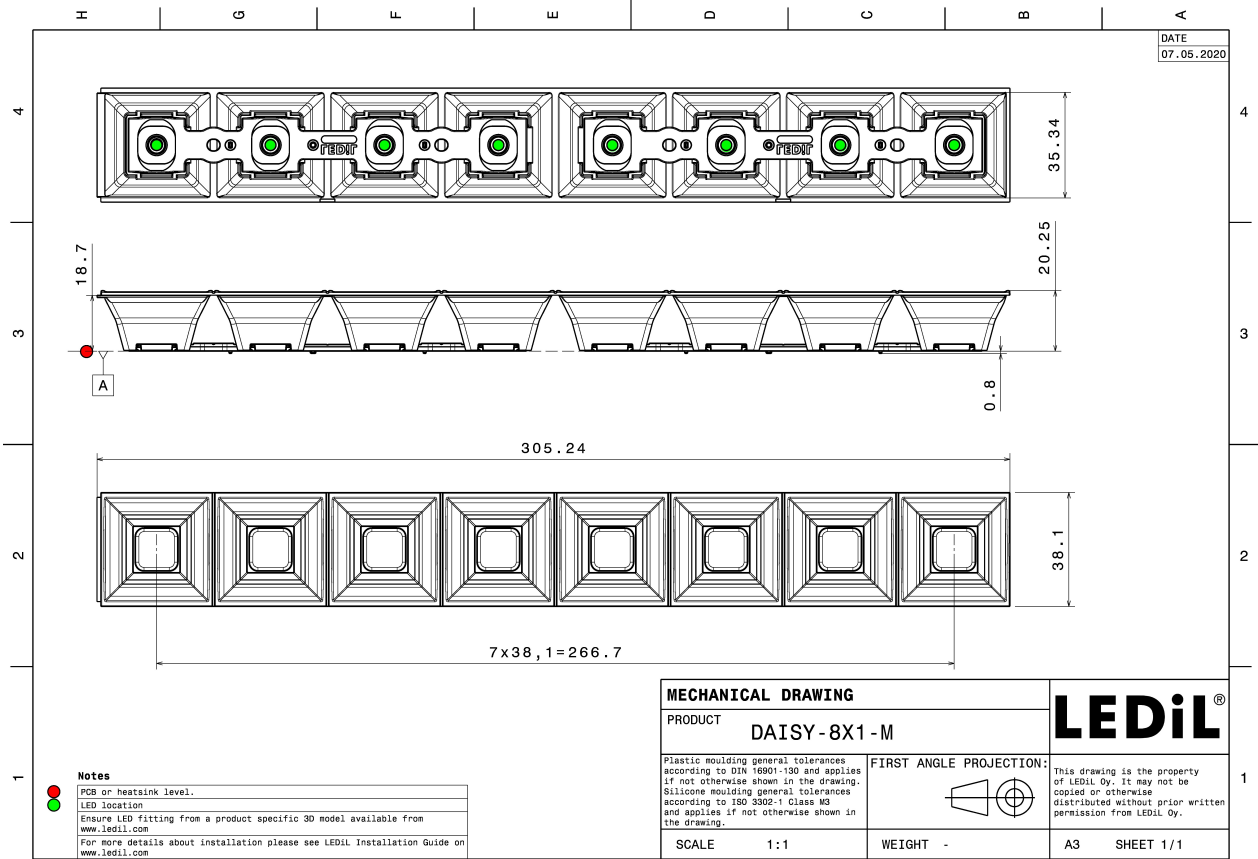
ORDERING INFORMATION:

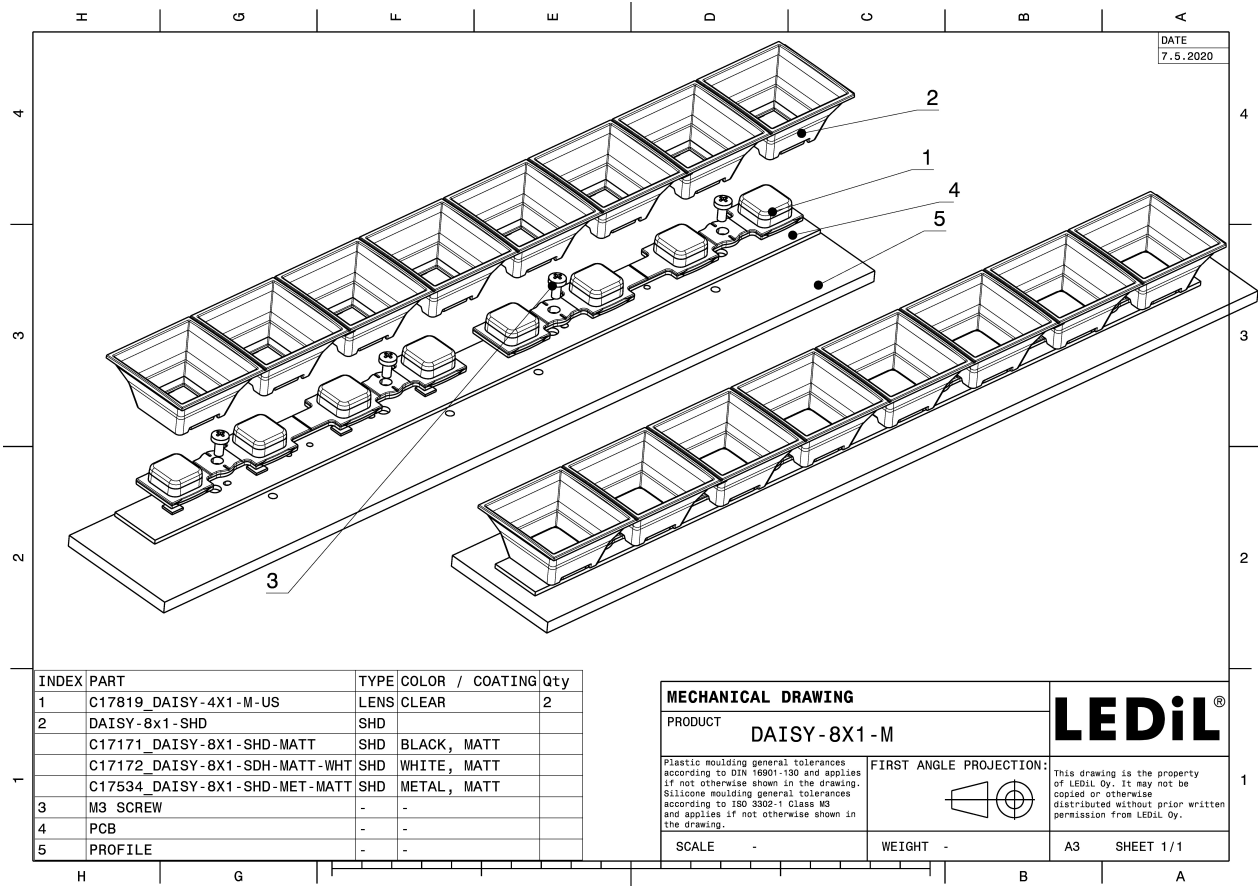
Quantities for one set:

Linear lens	2
Shade	1

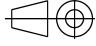


Component		Qty in box	MOQ	MPQ	Box weight (kg)
C17819_DAISY-4X1-M-US » Box size: 480 x 280 x 300 mm	Linear lens	504	84	84	6.2
C17171_DAISY-8X1-SHD-MATT » Box size: 400 x 300 x 300 mm	Shade	84	42	42	4.0
C17172_DAISY-8X1-SHD-MATT-WHT » Box size: 400 x 300 x 300 mm	Shade	84	42	42	4.2





INDEX	PART	TYPE	COLOR / COATING	Qty
1	C17819_DAISY-4X1-M-US	LENS	CLEAR	2
2	DAISY-8x1-SHD	SHD		
	C17171_DAISY-8X1-SHD-MATT	SHD	BLACK, MATT	
	C17172_DAISY-8X1-SDH-MATT-WHT	SHD	WHITE, MATT	
	C17534_DAISY-8X1-SHD-MET-MATT	SHD	METAL, MATT	
3	M3 SCREW	-	-	
4	PCB	-	-	
5	PROFILE	-	-	

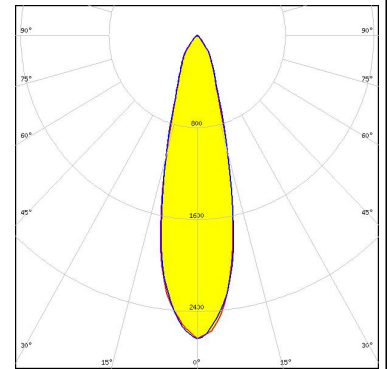
MECHANICAL DRAWING		LEDiL®
PRODUCT DAISY-8X1-M		
Plastic moulding general tolerances according to DIN 16801-130 and applies if not otherwise shown in the drawing. Silicone moulding general tolerances according to ISO 3302-1 Class M3 and applies if not otherwise shown in the drawing.	FIRST ANGLE PROJECTION: 	This drawing is the property of LEDiL Oy. It may not be copied or otherwise distributed without prior written permission from LEDiL Oy.
SCALE -	WEIGHT -	A3 SHEET 1/1

See also our general installation guide: www.ledil.com/installation_guide

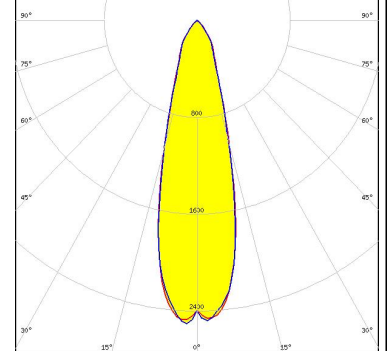
OPTICAL RESULTS (SIMULATED):



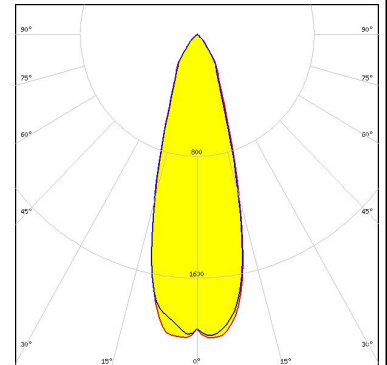
LED J Series 5050 Round LES
 FWHM / FWTM 26.0° / 59.0 + 60.0°
 Efficiency 86 %
 Peak intensity 2.7 cd/lm
 LEDs/each optic 1
 Light colour White
 Required components:
 C17171_DAISY-8X1-SHD-MATT



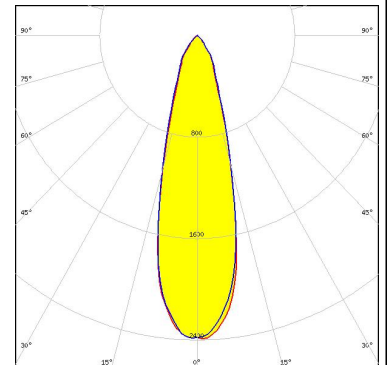
LED J Series 5050 Round LES
 FWHM / FWTM 28.0° / 64.0 + 62.0°
 Efficiency 87 %
 Peak intensity 2.5 cd/lm
 LEDs/each optic 1
 Light colour White
 Required components:
 C17171_DAISY-8X1-SHD-MATT



LED LUXEON 5050 Square LES
 FWHM / FWTM 32.0° / 70.0°
 Efficiency 86 %
 Peak intensity 2 cd/lm
 LEDs/each optic 1
 Light colour White
 Required components:
 C17171_DAISY-8X1-SHD-MATT



LED LUXEON 5050 Square LES
 FWHM / FWTM 28.0° / 63.0 + 66.0°
 Efficiency 87 %
 Peak intensity 2.4 cd/lm
 LEDs/each optic 1
 Light colour White
 Required components:
 C17171_DAISY-8X1-SHD-MATT

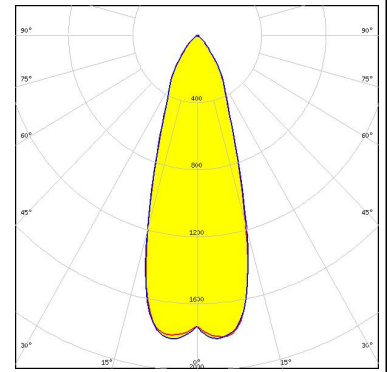


OPTICAL RESULTS (SIMULATED):

OSRAM

Opto Semiconductors

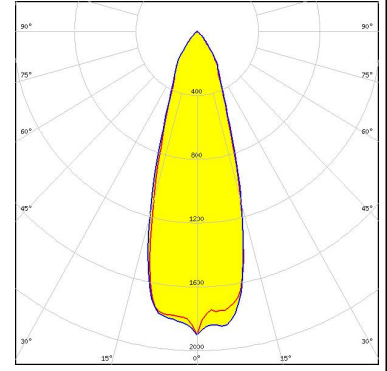
LED Duris E 2835
 FWHM / FWTM 36.0° / 76.0°
 Efficiency 93 %
 Peak intensity 1.8 cd/lm
 LEDs/each optic 2
 Light colour White
 Required components:
 C17171_DAISY-8X1-SHD-MATT



OSRAM

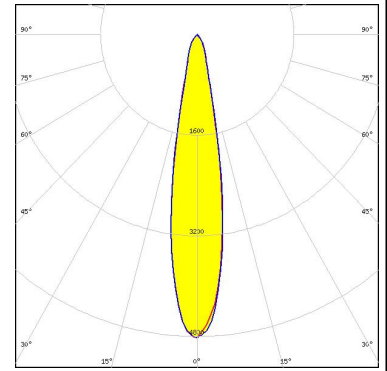
Opto Semiconductors

LED Duris S8
 FWHM / FWTM 32.0 + 34.0° / 70.0 + 72.0°
 Efficiency 86 %
 Peak intensity 1.9 cd/lm
 LEDs/each optic 1
 Light colour White
 Required components:
 C17171_DAISY-8X1-SHD-MATT



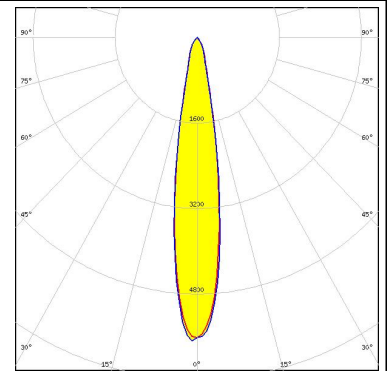
SAMSUNG

LED LH231B
 FWHM / FWTM 20.0° / 39.0 + 38.0°
 Efficiency 86 %
 Peak intensity 4.8 cd/lm
 LEDs/each optic 1
 Light colour White
 Required components:
 C17171_DAISY-8X1-SHD-MATT



SAMSUNG

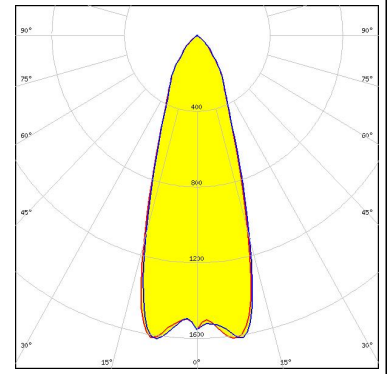
LED LM28xB Series
 FWHM / FWTM 18.0° / 36.0 + 35.0°
 Efficiency 89 %
 Peak intensity 5.7 cd/lm
 LEDs/each optic 1
 Light colour White
 Required components:
 C17171_DAISY-8X1-SHD-MATT



OPTICAL RESULTS (SIMULATED):

SAMSUNG

LED	LM28xB Series
FWHM / FWTM	36.0° / 76.0°
Efficiency	83 %
Peak intensity	1.6 cd/lm
LEDs/each optic	2
Light colour	White
Required components:	
	C17171_DAISY-8X1-SHD-MATT



GENERAL INFORMATION:

NOTE: The typical beam angle will be changed by different color, chip size and chip position tolerance. The typical total beam angle is the full angle measured where the luminous intensity is half of the peak value.

MATERIALS:

As part of our continuous research and improvement processes, and to ensure the best possible quality and availability of our products, LEDiL reserves the right to change material grades without notice.

PRODUCT DATA USER AGREEMENT AND DISCLAIMER:

The measured data in the provided downloadable LEDiL Product Datasheets and Mechanical 2D-Drawings is rounded and provided as reference for planning. LEDiL Oy's optical specifications have been verified by conducting performance testing of the products in accordance with the company's quality system. The reported data are averaged results of multiple measurements with typical variation. LEDiL Oy reserves the right to without prior notification make changes and improvements to its products.

LEDiL Oy assumes neither warranty, nor guarantee nor any other liability of any kind for the contents and correctness of the provided data. The provided data has been generated with highest diligence but the provided data may in reality not represent the complete possible variation range of all intrinsic parameters. Therefore, in certain cases a deviation from the provided data could occur.

LEDiL Oy reserves the right to undertake technical changes of its products without further notification which could lead to changes in the provided data. LEDiL Oy assumes no liability of any kind for the possible deviation from any provided data or any other damage resulting from the usage of the provided data.

The user agrees to this disclaimer and user agreement with the download or usage of the provided files.

LEDiL Oy

Joensuunkatu 13
FI-24240 SALO
Finland

LEDiL Inc.

228 West Page Street
Suite D
Sycamore IL 60178
USA

Ledil Optics Technology (Shenzhen) Co., Ltd.

405 , Block B
Casic Motor Building
Shenzhen 518057
P.R.CHINA

Local sales and technical support

[www.ledil.com/
where_to_buy](http://www.ledil.com/where_to_buy)

Shipping locations

Salo, Finland
Hong Kong, China

Distribution Partners

[www.ledil.com/
where_to_buy](http://www.ledil.com/where_to_buy)